

Plume structure in high Rayleigh number convection

By **BABURAJ A. PUTHENVEETIL**
AND **JAYWANT H. ARAKERI**¹

Department of Mechanical Engineering, Indian Institute of Science, Bangalore, India.

¹jaywant@mecheng.iisc.ernet.in

(Received October 2004 and in revised form March 2005)

Near wall structures in turbulent natural convection at Rayleigh numbers of 10^{10} to 10^{11} at Schmidt number of 602 are visualised by a new method of driving the convection across a fine membrane using concentration differences of NaCl. The visualisations show the near wall flow to consist of sheet plumes. A wide variety of large scale flow cells, scaling with the cross section dimension, are observed. Multiple large scale flow cells are seen at $AR = 0.65$, while only a single circulation cell is detected at $AR = 0.435$. The cells (or the mean wind) are driven by plumes coming together to form columns of rising lighter fluid. The wind in turn aligns the sheet plumes along the direction of shear. The mean wind direction is seen to change with time. The near wall dynamics show plumes initiated at points, which elongate to form sheets and then merge. Increase in Rayleigh number results in larger number of closely and regularly spaced plumes. The plume spacings show a common log-normal probability distribution function, independent of the Rayleigh number and the aspect ratio. We propose that the near wall structure is made of laminar natural convection boundary layers, which become unstable to give rise to sheet plumes, and show that the predictions of a model constructed on this hypothesis match the experiments. Based on these findings, we conclude that in the presence of a mean wind, the local near wall boundary layers associated with each sheet plume in high Rayleigh number turbulent natural convection are likely to be laminar mixed convection type.

1. Introduction

Turbulent Rayleigh - Bénard convection, or its variants of natural convection over horizontal surfaces, is extensively studied as a simple system for investigating buoyancy generated turbulence. In addition to the wide engineering applications, turbulent natural convection also occurs in atmospheric boundary layers, oceans and other large water bodies and earth's interior. The following non-dimensional parameters characterise turbulent natural convection. Rayleigh number, $Ra = g\beta\Delta TH^3/(\nu\alpha)$ is the ratio of the driving buoyancy forces to the restraining dissipative effects; Prandtl number, $Pr = \nu/\alpha$, a fluid property, is the ratio of the rate of propagation of momentum to that of heat; and aspect ratio, $AR = \frac{L}{H}$, is a geometric parameter. In the case of unsteady Rayleigh - Bénard convection, the ratio of top to bottom fluxes is an additional parameter. Nusselt number, $Nu = q/(\alpha\Delta T/H)$, a non-dimensional flux, depends on the above parameters. Here, g = the acceleration due to gravity, β = the coefficient of thermal expansion, ΔT = the temperature difference between the walls, H = the fluid layer height, ν = the kinematic viscosity, α = the thermal diffusivity, L = the horizontal dimension of the fluid layer and

q = the kinematic heat flux, $Q/\rho C_p$ where, Q = the heat flux, $-k_f \frac{\partial T}{\partial Y}|_{y=0}$, ρ = the fluid density, and C_p = the specific heat at constant pressure. If a species is used to create the density difference, then species diffusivity D is used instead of α , and Schmidt number ($Sc = \nu/D$) replaces Pr . We briefly look at some of the issues of high Ra turbulent convection, for details, the reader is referred to the reviews of Spiegel (1971), Adrian, Ferreira & Boberg (1986), Siggia (1994) and Kadanoff (2001).

1.1. Characteristic scales

The convection becomes turbulent beyond $Ra \sim 10^5$ for $Pr \sim 7$, (Krishnamurthi 1970), from which point onwards the layer exhibits a clear division into bulk and near wall regions. Dissipative effects are important near the wall while turbulent processes dominate the bulk. The relevant bulk variables are q , $g\beta$ and H . Dimensional analysis implies that the fluctuation scales for velocity, temperature and length in the bulk are (Deardorff 1970),

$$W_* \sim (g\beta q H)^{1/3}, \quad \theta_* \sim \frac{q}{W_*}, \quad Z_* \sim H. \quad (1.1)$$

Note that W_* , the Deardorff's velocity scale also be obtained by equating the volume integrated values of kinetic energy dissipation to the buoyant production of kinetic energy.

Diffusive effects are important close to the walls and there is no independent length scale in this region. The relevant independent variables are $\alpha, \nu, g\beta$ and q . Based on dimensional reasoning from these variables Townsend (1959) introduced velocity, temperature and length scales as

$$W_o \sim (g\beta q \alpha)^{1/4}, \quad \theta_o \sim \frac{q}{W_o}, \quad \text{and} \quad Z_o \sim \frac{\alpha}{W_o}. \quad (1.2)$$

Alternatively, taking ΔT_w , the temperature difference between the wall and the bulk as the independent variable instead of q , Theerthan & Arakeri (1998) defined near wall velocity, temperature and length scales as

$$U_w \sim (g\beta \Delta T_w)^{1/3} (\nu \alpha)^{1/6}, \quad \theta_w \sim \Delta T, \quad \text{and} \quad Z_w \sim \frac{\sqrt{\alpha \nu}}{U_w}. \quad (1.3)$$

It is possible to express the relations between these variables in terms of the non-dimensional parameters Ra, Nu and Pr . The details of these relations are given in Theerthan & Arakeri (1998) and Adrian *et al.* (1986). With increase in Rayleigh number, it is believed that the bulk starts affecting the near wall flow. This is because the ratio of the bulk to the near wall velocities increase monotonically with Ra as

$$W_*/W_o \sim (Ra Nu Pr)^{1/12}. \quad (1.4)$$

1.2. Flux scaling

The major focus of research in high Ra convection studies has been on the scaling of Nu as a function of Ra . Two asymptotic relations can easily be obtained from dimensional analysis. If the heat transfer is solely decided by the resistance of the boundary layers, the layer height should not be a parameter and we obtain,

$$Nu \sim Ra^{1/3}, \quad \text{i.e., } q \sim \Delta T^{4/3}. \quad (1.5)$$

On the other hand, if the heat transfer is decided by the turbulent bulk, and the resistances of the boundary layers are negligible, diffusive properties should not occur in the Nu relation, and then

$$Nu \sim (Ra Pr)^{1/2}. \quad (1.6)$$

The experimentally observed scaling law is $Nu \sim Ra^n$ where n shows a huge variation between 0.20 to 0.382, with the majority of the exponents being slightly less than 0.3 (Chavanne, Chilla, Chabaud, Castaing & Hebral 2001; Siggia 1994; Niemela, Skrbek, Sreenivasan & Donnelly 2000; Xia, Lam & Zhou 2002). The exponent being close to 1/3 implies that the flux is predominantly determined by the near wall phenomena, but not completely so. This anomalous scaling of n not being equal to 1/3 is expected to be due to a large scale coherent circulation spanning the two plates which modifies the near wall boundary layers. As the strength of the mean circulation is expected to be dependent on the geometry of the test section, the circulation also brings in the layer height and the aspect ratio dependence of the flux.

Various theories have been proposed to explain the anomalous flux scaling in high Rayleigh number turbulent natural convection. Each of them involve assumptions about the near wall phenomena: a near wall mixing zone (Castaing, Gunaratne, Heslot, Kadanoff, Libchaber, Thomae, Wu, Zaleski & Zanetti 1989), turbulent shear boundary layer (Shraiman & Siggia 1990) and Blasius boundary layer (Grossmann & Lohse 2001). The boundary layers are assumed to span the entire horizontal surface in these theories. In high Rayleigh number convection, the nature of near wall boundary layers and especially their interaction with the large scale circulation or ‘wind’ remain a matter of controversy.

1.3. Near wall structures

With the background of these theoretical models, it is worthwhile to see the experimental and numerical evidence of near wall structures in turbulent Rayleigh - Bénard convection. The visualisations of near wall structures have usually been conducted in water ($Pr = 6$) up to $Ra \sim 10^9$. Visualisations at higher Rayleigh number are not available as these studies are conducted under cryogenic conditions. Studies at $Ra < 10^8$, like Spangenberg & Rowland (1961); Theerthan & Arakeri (2000, 1994) and Adrian *et al.* (1986), show randomly moving and merging sheet plumes near the walls. Sheet plumes are buoyant fluid rising in the form of sheets from lines on the horizontal heated surface. Similarly, falling sheets of heavier fluid would be found from the upper surface. These sheets are formed due to the buoyant boundary layers becoming unstable along the lines. Studies on convection over horizontal heated plates by Sparrow & Husar (1969) and Kitamura & Kimura (1995) also show randomly moving sheet plumes in regions away from the edges of the plate. Zocchi, Moses & Libchaber (1990)’s visualisations in water at $Ra \sim 10^9$ detected a large scale flow oriented along the diagonal of the cross section which was driven by plume columns rising along one corner. They observed near wall sheet plumes which were swept along the direction of the shear. Funfschilling & Ahlers (2004) observe sheet plumes with predominant motion along their long axis at $Ra \leq 10^9$, with the direction of this motion shifting about 60° with a specific frequency for a given Ra . Near wall buoyant sheets were also observed in numerical simulations by Kerr (1996) at $Ra = 2 \times 10^7$ at $Pr = 0.7$. Schmidt & Schumann (1989) find sheet plumes near the bottom surface in LES simulations of convective boundary layer at $Ra = 1.7 \times 10^{16}$.

Measurements with single point probes give the mean temperature or velocity profiles, but fail to identify the laterally moving and merging sheet plumes. The thermal boundary layer thickness, defined up to the point where a linear fit to the near wall temperature profile intersects the well mixed profile in the bulk, is seen in these studies to scale as $\delta_t \sim Ra^{-m}$, where m is around 0.3 (0.288 by Xin & Xia (1997), 0.29 by Belmonte, Tilgner & Libchaber (1994), 0.309 by Chavanne *et al.* (2001) etc). The boundary layer thickness measured in this way is seen to depend on the spatial location as well as on the direction of traverse (Lui & Xia 1998). They noticed that there was no repeatability of the measurements till $Ra \sim 10^9$, beyond which the thermal boundary layer thickness showed

an M shaped profile in directions perpendicular to the near wall mean shear direction. Another observation is the presence of the maximum RMS horizontal velocity fluctuations at around the height of the thermal boundary layer (Belmonte *et al.* 1994). There have also been suggestions that the boundary layer (which is assumed to span the whole width) undergoes a transition at $Ra \sim 10^9$ by Belmonte *et al.* (1994) and Chavanne *et al.* (2001), which has however not been observed in the numerical simulations of Verzicco & Camussi (2003).

Theories based purely on near wall dynamics have also been proposed for turbulent Rayleigh - Bénard convection. Howard (1964) showed that the near wall dynamics can be approximated as the periodic of growth of a conduction layer which erupts emitting thermals, to obtain the $Ra^{1/3}$ scaling. Theerthan & Arakeri (1998) proposed an alternate model based on the experimental observations of persistent sheet plumes and predicted the normalised mean plume spacing $\lambda/Z_w \simeq 52$. They also showed that the model predictions of near wall distributions of mean temperature and RMS of the fluctuations of temperature and vertical velocity match that of experiments.

1.4. Outer flow

As seen in equation(1.4), the bulk velocity increases with increase in Ra and is expected to affect the near wall flow beyond some Ra . Krishnamurthi and Howard (see Siggia (1994)) were the first to report a large scale circulation or ‘wind’, which could affect the near wall boundary layers. More recently, the wind has been the subject of study, mostly in $AR \sim 1$ cells. The origin, strength and the effect of this circulation is not known clearly. The exponent in $Re \sim Ra^\gamma$, where Re is based on mean wind strength and layer height, varies between 0.424 to 0.5 (See the tabulation of Chavanne *et al.* (2001)). This mean circulation has been shown by Burr, Kinzelbach & Tsinober (2003) and Xia, Sun & Zhou (2003) to be driven by the mean buoyancy differences in the bulk, and not by the Reynolds stresses. Werne (1993) show from two dimensional simulations that plumes have an active role in driving the large scale flow. The sense of this large scale flow is also noticed to change with time (Niemela, Skrbek, Sreenivasan & Donnelly 2001). Multiple circulation cells have been found by Verzicco & Camussi (2003) in low Aspect ratio(0.5) cells. Daya & Ecke (2001) found that, in unity aspect ratio cells, the strength of the temperature and the vertical velocity fluctuations in the bulk, and their scaling with Rayleigh number depend strongly on whether the test section was square or circular in cross section. Niemela & Sreenivasan (2003) suggest that the considerable differences (up to 25%) in the values of Nu for Ra between 10^9 and 10^{12} could be due to the different time averaged states of the large scale flow. Recent PIV measurements by Xia *et al.* (2003) show that there is a central low velocity core where Re scales as $Ra^{0.4}$, while in the outer higher velocity shell, $Re \sim Ra^{0.5}$. The circulation is along the diagonal, similar to the observations by Belmonte *et al.* (1994) and Zocchi *et al.* (1990). The effect of the large scale flow on the near wall boundary layers is still a matter of contention. Castaing *et al.* (1989) assume that the mean wind stabilises the boundary layers. Shraiman & Siggia (1990) propose that a turbulent shear boundary layer is formed (similar to the proposal of Kraichnan (1962)) and that the heat flux into the diffusive boundary layer is completely carried away by the large scale flow. Grossman & Lohse (2000) assume that a Blasius boundary layer spans the cell width and predict the Ra and Pr dependence of wind velocity as $Re = 0.102 Ra^{0.447} Pr^{-0.7 \text{ to } -0.73}$ for $10^8 < Ra < 10^{10}$ and $3 < Pr < 1200$ (Grossman & Lohse 2002).

1.5. Prandtl number dependence

The Prandtl number dependence of the Nusselt number in the high Ra - high Pr regime is not conclusive as there have been very few studies. At a Pr of 2750, Goldstein & See (1990) obtained $Nu = 0.0659Ra^{1/3}$. Ashkenazi & Steinberg (1999) obtained a fit of $Nu = 0.22Ra^{0.3\pm 0.03}Pr^{-0.20\pm 0.04}$ for $10^9 < Ra < 10^{14}$ and $1 < Pr < 93$. The errors in their exponent do not allow rigorous conclusions about the scaling. Xia, Lam & Zhou (2002) covered a wide Prandtl number range of $4 < Pr < 1350$ for $10^7 < Ra < 10^{10}$ (for $Pr > 396$, Ra was limited to less than 10^9) and obtained a weak Pr dependence, $Nu = 0.14Ra^{-0.297}Pr^{-0.03}$. In the range of $0.022 < Pr < 15$ at $Ra \leq 10^7$, Nu showed negligible dependence on Pr for $Pr > 0.35$ (Verzicco & Camussi 1999). A similar weak decrease of Nu for $0.7 < Pr < 7$ in the range $10^4 < Ra < 10^7$ was observed by Kerr & Herring (2000).

The large scale flow strength is generally seen to decrease with Pr : $Re = 0.335Ra^{0.495}Pr^{-0.88}$ ($Re = 1.09Ra^{0.43}Pr^{-0.76}$ based on oscillation frequency) for $10^6 < Ra < 10^{11}$, $6 < Pr < 1027$ (Lam, Shang, Zhou & Xia 2002) and $Re = 2.6Ra^{0.43\pm 0.02}Pr^{-0.75\pm 0.02}$ (Ashkenazi & Steinberg 1999). Verzicco & Camussi (1999) observed that with increase in Pr the large scale flow strength reduces, but still determines the structure of the boundary layer. At larger Pr , the mean wind played negligible role in heat transport, which was mainly conducted by plumes. Larger and fewer number of plumes were observed by Kerr & Herring (2000) with increasing Pr , with the network type near wall structure changing to clear cells.

In the high Rayleigh number regime ($Ra > 10^7$) Prandtl number dependence of the Nusselt number for $Pr > 1$ is much weaker than the $-1/7$ power predicted by the theories of Castaing *et al.* (1989) and Shraiman & Siggia (1990). At very high Pr , the viscous boundary layers reach their limiting thickness as the large scale flow strength reduces (Grossmann & Lohse 2001). Due to the thicker viscous boundary layer, the effects of the large scale flow shear would be felt less by the thermal boundary layer at higher Pr . Plumes start to play a major role in the heat transport. Hence, at high Pr , Nu is expected to become independent of Pr and to follow the classical $Ra^{1/3}$ scaling. A recent theory of Constantin and Doering (see Chavanne *et al.* (2001)) predict $Nu \sim Ra^{1/3}$ bound for infinite Prandtl number convection.

1.6. Present study

From the current state of understanding, it can hence be concluded that the nature of near wall boundary layers in high Rayleigh number turbulent Rayleigh - Bénard convection is not clear. The origin of large scale flow is also not well established. The interaction of the large scale flow with the boundary layers is even less clear. Most of the experiments at $Ra > 10^9$ have been under cryogenic conditions and thus visualisations have not been possible. The motivation of the present study was to investigate high Rayleigh number turbulent natural convection in the high Prandtl number regime, focusing on the nature and the role of near wall coherent structures. We achieve this objective by setting up unsteady turbulent natural convection driven by density differences across a thin permeable horizontal partition separating two tanks of square planform cross sections. The gravitational potential due to a heavier fluid (brine) above a lighter fluid (water) across the partition drives the flow, which is resisted by the presence of the micro porous partition. At low pore sizes in the membrane, the transport across the partition would become diffusion dominated, while the transport above and below the partition becomes similar to turbulent natural convection above flat horizontal surfaces. The concentration difference between the membrane surface and the bulk is equivalent to the temperature difference between the wall and the bulk in Rayleigh - Bénard convection. As molecular

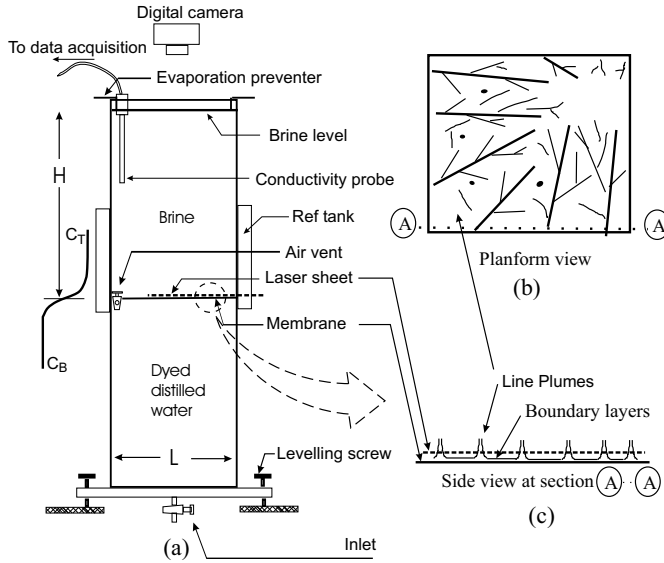


FIGURE 1. Experimental set up and the visualisation process. (a) The overall set up (b) The planform view of the plume structure just above the membrane, as seen from the top, at the intersection of a horizontal laser sheet with the ascending dyed lighter fluid. (c) The side view in a vertical plane shows rising sheet plumes.

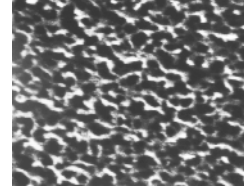


FIGURE 2. SEM image (3000 \times) of the Pall GellmanTM membrane

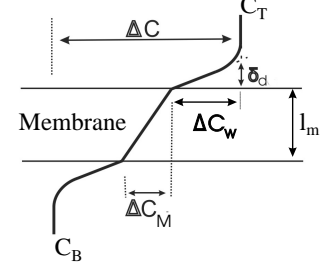


FIGURE 3. Concentration profile across the membrane (ΔC_M) and the boundary layer (ΔC_w)

diffusivity of NaCl in water is about 100 times lower than the thermal diffusivity, large values of Rayleigh number and Schmidt number are achieved through this arrangement. We achieve $Ra \sim 10^{11}$ at $Sc \sim 602$. The main advantages with the present experimental technique are that high Ra and high Sc values are achieved without going in for very large setups and the near wall structure of convection is easily visualised (Puthenveetil (2004)).

The paper is organised as follows. The experimental setup and the measurement details are discussed in Section 2. We first show in Section 3 that the flux scaling obtained is similar to those achieved in other high Rayleigh number Rayleigh - Bénard convection experiments at comparable Prandtl numbers. The images of the near wall plume structure, which show merging sheet plumes, are discussed in Section 4 and 5 to form conclusions about the nature and origin of the large scale flow, near wall plume dynamics, as well as about the interaction of the large scale flow with the near wall plumes. We hypothesise that the near wall boundary layers associated with the plumes are most likely to be laminar natural convection boundary layers, which become unstable to give rise to the sheet plumes near the wall. This assumption is validated in Section 7.1 by showing that the predictions of a model constructed on this hypothesis reproduce the measured mean spacings between the near wall sheet plumes. Based on this finding, we conclude in Section 8 that the near wall boundary layers in high Rayleigh number turbulent free convection, in the presence of a large scale circulation, are laminar natural convection boundary layers, forced externally by the mean shear.

2. Experimental setup and data analysis

2.1. Setup

The experimental setup (Figure 1) consists of two glass compartments of square cross section, arranged one on top of the other with a fine membrane fixed horizontally in between them. The membrane used is Pall GellmannTMNX29325 membrane disc filter having a random pore structure with specifications of mean pore size 0.45μ and mean thickness $l_m = 142.24\mu$. Figure 2 shows the $3000\times$ scanning electrode microscope (SEM) image of the membrane surface. The open area factor of the membrane is estimated as $\Gamma = 0.6$ by calculating the occupied area from a binary image. The binary image is obtained by choosing an appropriate threshold so that the features match the original image shown in Figure 2. The membrane is slightly stretched before fixing to keep it taut during the experiment. The bottom tank is filled with distilled water tagged with a small amount of sodium fluoresceine, and then the top tank is filled with brine. A thin walled tank with a thin glass plate on top of a sponge bottom, and just fitting into the top compartment, is kept within the top compartment during the filling process; this prevents undue initial mixing due to direct impingement of brine on the membrane. Once the brine in the top tank reached the height of the bottom tank, this inner tank is slowly removed to initiate the experiment. A thin transparent Plexiglas sheet of dimensions of the test section cross section is kept floating on the top of the brine solution to prevent evaporation and to produce similar boundary conditions in the two compartments. The whole assembly is mounted on a levelling table to make the membrane horizontal. Diffusion of salt across the membrane sets up unstable layers on either side and causes convection in the two tanks. It is a run down experiment; convection eventually stops after density equalisation in the tanks, which typically takes about 2 days.

A horizontal laser light sheet, expanded and collimated from a 5W Spectra Physics Ar-Ion laser StabiliteTM2017 is passed just above ($< 1\text{ mm}$) the membrane to visualise the planform view of the near wall structures. The laser sheet could be rotated 90° by rotating the beam expander lens so as to view the structures in a vertical plane. The laser sheet could also be moved horizontally and vertically. The dye in the bottom solution while convecting upward fluoresces on incidence of the laser beam to make the plume structure visible. The diffusion coefficient of salt is about three times the diffusion coefficient of dye ($Sc = 2000$ for the dye as against $Sc = 602$ for the salt). The very low concentration ($\approx 1.2\text{ppm}$) of the dye used causes negligible density change and hence the dye can be considered as a passive tracer. A visible long pass filter glass, Coherent optics OG-515, is used to block any scattered laser light and allow the emitted fluorescence to pass through. The images are captured on a digital handycam Sony DCR PC9E. Experiments are conducted in two setups one having $15\text{cm}\times 15\text{cm}$ cross section and the other $10\text{cm}\times 10\text{cm}$ cross section. In both the setups the top and bottom compartments are 23cm high. Thus we have two aspect ratio values, 0.65 and 0.435 . We use starting top tank concentrations of 10g/l and 3g/l to study the plume structure under different Rayleigh numbers. Further details of the experimental setup and the procedure are discussed in detail in Puthenveetil (2004).

The flux is estimated from the transient measurement of the top tank concentration. The concentration of NaCl in the top tank is obtained from the measurement of electrolytic conductivity by an ORION SENSORLINKTMPCM100 conductivity measurement system(ORION 1999*a,b*). The cell has an outer diameter of 12mm and 0.5% full scale accuracy in the present measuring range of $2\text{mS} - 20\text{ mS}$, with automatic temperature compensation. The probe is calibrated for cell constant before each experiment, and the measured conductivities converted to NaCl concentrations using the standard

Test section cross section (cm)	H (cm)	AR	C_T^0 (g/l)
15 X 15	23	0.65	10 3
10 X 10	23	0.435	10 -

TABLE 1. Experimental parameters

relation from Lide (2001) . Before each experiment, as a check against the drift of the probe, known NaCl concentrations made from prepared samples and dilution samples from the top tank brine solution are measured and compared.

2.2. Data analysis

We assume that the fluid in both the compartments is well mixed in the region away from the membrane, and hence can be represented by the top tank concentration C_T and the bottom tank concentration C_B . This assumption is valid for high Rayleigh number convection which have thin boundary layers and a well mixed bulk. We checked this assumption by quantitative planar laser induced fluorescence (QPLIF) and by traversing the probe in the bulk. Using mass balance, at any instant of time t the concentration difference between the tanks, $\Delta C(t)$ is,

$$\Delta C(t) = C_T(t) - C_B(t) = \left(1 + \frac{V_T}{V_B}\right)C_T(t) - C_T^0 \frac{V_T}{V_B}. \quad (2.1)$$

where V_T is the top tank solution volume, V_B the bottom tank solution volume and the superscript 0 indicates the initial values. The rate of change of the well mixed top tank concentration would give the flux of NaCl into the top tank at any instant as,

$$q(t) = -H \frac{dC_T(t)}{dt}, \quad (2.2)$$

where H is the top and the bottom liquid layer heights. This is the mass transfer rate per unit area of the tank cross section. We make transient measurement of the changing well mixed concentration in the top tank to estimate ΔC from equation (2.1) and the flux from equation (2.2). An exponential decay fit of the form

$$C_T(t) = y_0 + A_1 e^{-t/b_1} + A_2 e^{-t/b_2} + A_3 e^{-t/b_3} \quad (2.3)$$

through the C_T Vs t curve is used to calculate $\frac{dC_T}{dt}$. In most experiments, concentration measurement and visualisations are conducted simultaneously. The quantity of dye is chosen so that the fluorescence intensity is enough for sufficient visibility while it is low enough not to affect the measured conductivity. The major parameters that are changed in the experiments are the aspect ratio and the starting concentration; the values of these parameters are shown in Table 1. The low concentration experiment is conducted to visualise the near wall structures at lower driving potentials (i.e lower Ra) as well as to see whether the flux is independent of the starting concentration.

It needs to be noted that convection in the present study is unsteady non-penetrating convection(UNP) while most of the investigations in the literature are for steady Rayleigh - Bénard convection(RBC). The top surface in the present study is adiabatic and the driving concentration difference and flux keeps changing through out the experiment. Adrian *et al.* (1986) have shown that for constant flux, UNP and RBC are similar with respect to turbulence characteristics. In the present case, even though the flux is not constant, the situation can be considered as quasi-steady as the time scale of change of

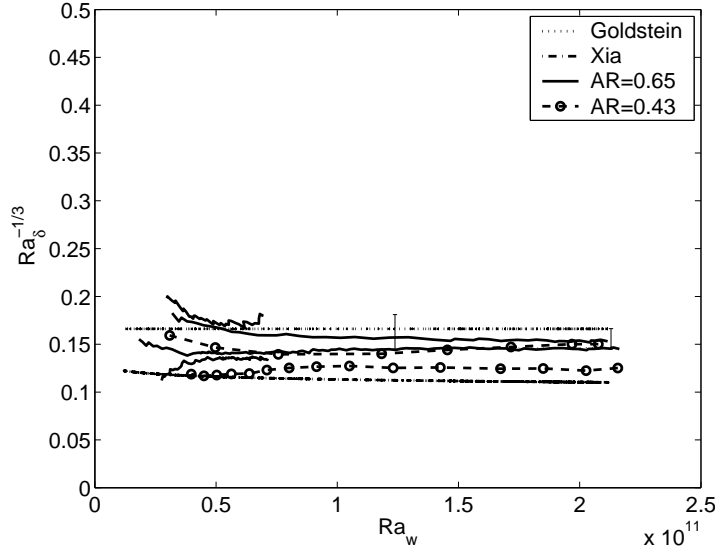


FIGURE 4. Variation of the non-dimensional flux, $Ra_\delta^{-1/3}$, with the Rayleigh number for different AR and C_T^o

concentration ($\Delta C / \frac{d\Delta C}{dt}$) is much larger (10times) than the time scale of one large scale circulation (H/W_*).

3. Flux Scaling

Diffusion transport across the membrane results in a concentration drop of ΔC_M across the membrane thickness (Figure 3). We estimate this concentration drop from the relation $\Delta C_M = \frac{q l_m}{\Gamma D}$ where, D = the molecular diffusivity of NaCl. The effective concentration difference on one side of the partition is $\Delta C_w = \frac{\Delta C - \Delta C_M}{2}$. We use ΔC_w as the relevant driving potential and

$$Ra_w = g\beta\Delta C_w H^3 / \nu D \quad (3.1)$$

as the relevant Rayleigh number for comparison with the high Rayleigh number turbulent natural convection results in the literature.

Theerthan & Arakeri (2000) have shown that in turbulent free convection, normalising the flux with near wall variables is more appropriate than normalising with the total temperature difference between the plates and the layer height, as is done in Nu . The new representation can be written as

$$Ra_\delta^{-1/3} = \frac{q}{D\Delta C_w/Z_w}, \quad (3.2)$$

where $Z_w = (\nu D / (g\beta\Delta C_w))^{1/3}$ is the near wall length scale for turbulent free convection given by equation (1.3). Here, Ra_δ is the Rayleigh number based on the diffusion layer thickness, δ_d ; $\delta_d = D\Delta C_w/q$ in the present case. This representation does not have the layer height as a parameter, and hence is a better representation in turbulent free convection where the near wall phenomena decides the flux; the differences in the near wall phenomena is reflected better in the variation of $Ra_\delta^{-1/3}$ than that of Nu . $Ra_\delta^{-1/3}$ is a direct measure of heat flux and varies only between 0.1 and 0.3 for various types of convection, AR, Ra and Pr . A correlation $Nu = CRa^n$ for RBC, rewritten in terms

of $Ra_\delta^{-1/3}$ becomes $Ra_\delta^{-1/3} = ARa^{n-1/3}$, where $A = 2^{4/3}C$. $Ra_\delta^{-1/3}$ is a constant if flux scales as $\Delta C^{4/3}$, i.e. if $Nu \sim Ra^{1/3}$; if $n = 2/7$ then $Ra_\delta^{-1/3} = ARa^{-1/21}$, a weak function of Ra . A similar feature is observed in wall bounded turbulent shear flows where variations of the coefficient of friction C_f with Reynolds number are found to be small. In fact, $Ra_\delta^{-1/3}$ is analogous to the C_f representation of wall shear stress.

Figure 4 shows the variation of $Ra_\delta^{-1/3}$ with Ra_w . The plot includes the results of experiments with a starting concentration of $C_T^0 = 10g/l$ at the two aspect ratios of 0.65 and 0.435, as well as experiments with starting concentration of $C_T^0 = 3g/l$ for AR=0.65. Repeated experiments are also shown to indicate the variability of the present results. The error bars shown in the plot are for the AR = 0.65 experiment. The line $Ra_\delta^{-1/3} = 0.166$ shown in the figure is obtained from the correlation of Goldstein & See (1990), $Nu = 0.065Ra^{1/3}$ for $10^8 \leq Ra \leq 10^{12}$ and $0.86 \leq AR \leq 24$ at $Pr=2750$. The value of $Ra_\delta^{-1/3}$ for Xia *et al.* (2002) is also shown in the figure. Xia obtained $Nu=0.14Ra^{0.297}Pr^{-0.03}$ for $10^7 \leq Ra \leq 10^{11}$ for $4 \leq Pr \leq 1352$. This relation is an adjusted fit over the whole Pr range; the measurements for $Pr > 556$ are only for $Ra \leq 10^8$ and the Pr dependence seems to vary for different Ra ranges (see Figure 2 of Xia).

Goldstein's and Xia's results envelope the present experimental results. The deviation at the left end of each curve cannot be inferred to be a change in the flux scaling, as the errors involved in calculating ΔC_w becomes large when the concentration differences between the tanks tend to zero. The present experimental values of $Ra_\delta^{-1/3}$ are nearly constant implying that the flux scales very nearly as the $4/3^{rd}$ power of ΔC_w . This is intuitively understandable as the effect of large scale coherent circulation on the near wall boundary layers is expected to become weaker with increase in Prandtl number (see section 1.5).

The low Ra_w range of the present experiments, does not allow clear identification of the exponent in the scaling law vis-a-vis that of Goldstein or Xia. Both the exponents look probable within the present range of Ra_w . The present experimental results at $Sc = 602$ are closer (about 15% lower at $Ra_w \sim 10^{11}$) to the values in Goldstein & See (1990)'s experiments, which are at $Sc = 2750$; the effect of Sc on flux seems to be weak at high Sc . The experimental results seem to be independent of the starting concentration. The aspect ratio dependence on the flux is weak and is not distinguishable within the variability of the present experimental results for the low range of AR. Still, the flux at lower AR seems to be lower than at higher AR. This is similar to the results of Wu & Libchaber (1992) who finds decreasing flux with decreasing AR for $AR \leq 1$. The present variability in flux is about 25% at $Ra_w \sim 10^{11}$. It is to be noted that a large variability ($\sim 25\%$) of Nu is present in the results of previous investigators for $10^9 \leq Ra \leq 10^{12}$, as noticed in the review of Niemela & Sreenivasan (2003) (see their Figure 5). They hypothesize the presence of different time averaged mean flow for a given set of conditions as the possible cause of this variation. It is also possible that the variation of the present experimental results is due to the slight changes in the open area factor of the membrane. These issues cannot be resolved within the limitations of the present experimental effort. Therefore, we conclude that at Rayleigh numbers of $10^{10} - 10^{11}$ and Schmidt number of 602, the flux from the present experiments scale similar to that in turbulent Rayleigh - Bénard convection ($Nu \sim Ra^{1/3}$) at high Pr .

4. Plume structure at AR=0.65

4.1. $Ra_w \sim 10^{10}$

Figure 5(a) shows the planform plume structure, obtained when the upcoming dyed fluid from the bottom tank intersects the horizontal laser light sheet, which is typically less than 1mm above the membrane. The experiment was started with an initial top tank concentration of $C_T^o = 3g/l$. The image shows the full test section cross section of $15cm \times 15cm$ and is at $Ra_w = 6.39 \times 10^{10}$. The other parameter details are shown in Table 2. The white lines in the image are the top view of the dyed lighter fluid rising from the membrane surface, and represent bases of sheet plumes. Figure 5(b) to 5(d) show the planform views at 2cm, 4cm, and 6cm above the membrane surface. These images were obtained by placing the horizontal laser sheet at these heights. The time period between Figure 5(a) to 5(d) is 6min so that Ra_w is nearly the same in all the cases shown. The side view of the plume structure in a vertical plane 2cm from the side wall (ie. 2 cm above the bottom edge of Figure 5(a)) after 10 min of Figure 5(d) is shown in Figure 5(e).

4.1.1. Large scale flow dynamics

The near wall planform of Figure 5(a) shows aligned sheet plumes near the left and the right walls. There is a region in the center which do not have aligned structures. The planform views at different heights show cross sections of a rising column of plumes. Note that sheet plumes are seen only very close to the wall; at a short height from the wall, they turn into axisymmetric plumes with mushroom like caps and merge. The intersection of these axisymmetric plumes with the laser sheet are seen as points or circles in Figure 5(b) and 5(c). The plumes loose their identity due to mixing at a height of 6cm from the membrane. The rising column in the center, with small near wall plumes being swept towards it is clearly seen in the side view of Figure 5(e).

Based on these observations, we infer the large scale flow to be two counter rotating rolls, schematically shown in Figure 5(f). The large scale flow is driven by the rising plume column in the center. This rising line of lighter fluid in the center create regions of fluid which are coming down near the wall, to create the two counter rotating large scale flow cells. The large scale flow cells in turn create a mean shear near the membrane, aligning the near wall plumes and sweeping the smaller near wall plumes into the main rising plume column. The planform plume structure in Figure 5(a) is the result of this larger mean shear near the walls with a rising column in the center. Hence, the effect of the large scale flow on the near wall structures in high Rayleigh number turbulent free convection is to align the near wall sheet plumes in the direction of the mean shear. This is an important result of the present study, which helps us later in inferring about the nature of the boundary layers in between the sheet plumes in the presence of a mean wind.

Using a spatial intensity correlation technique (Gendrich & Koochesfahani 1996) we estimate the plume column velocities. The maximum plume column rise velocities are $V_{LS} = 0.16$ cm/s ($Re = 412.1$) at $Ra_w = 6.23 \times 10^{10}$, where the subscript LS denote large scale. There are down flow regions with velocity of about $V_{LS} = 0.02$ cm/s ($Re = 52.5$) near the membrane on both sides of the rising plume column. The mean time of circulation (H/V_{LS}) of the large scale flow cell is about 4.25 min. We now briefly compare the earlier estimates of large scale flow velocity with the present measurements. The high Prandtl number measurements of large scale flow velocity by Lam *et al.* (2002) (See section 1.5) for the present Ra_w and Sc give $Re = 264.5$ ($V_{LS} = 0.103$ cm/s). Ashkenazi & Steinberg (1999) correlation (section 1.5) shows a possible variation of $501.9 < Re < 1752.1$ ($0.195\text{cm/s} < V_{LS} < 0.68\text{cm/s}$) for the present $Ra_w - Sc$ combination. Niemela

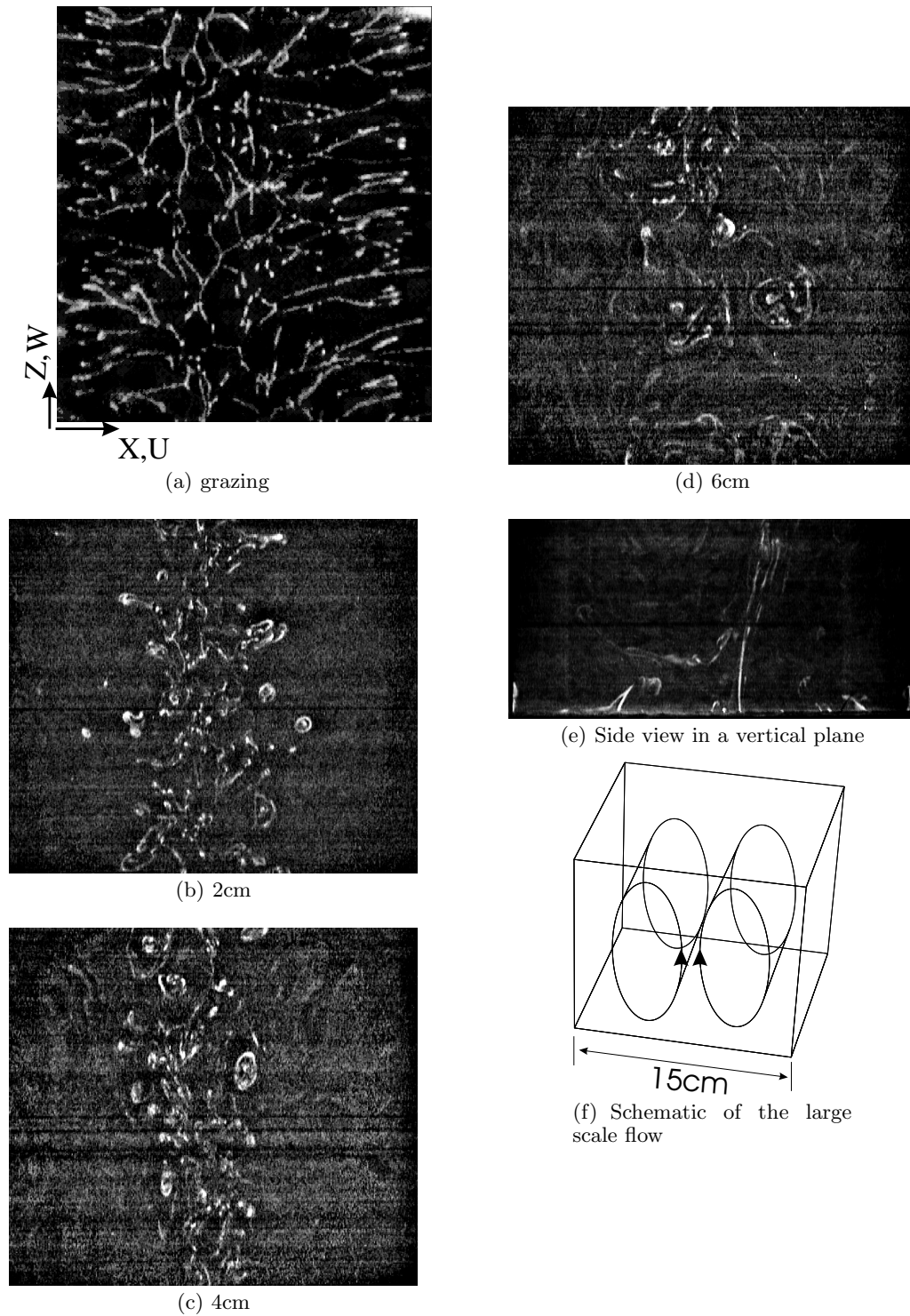
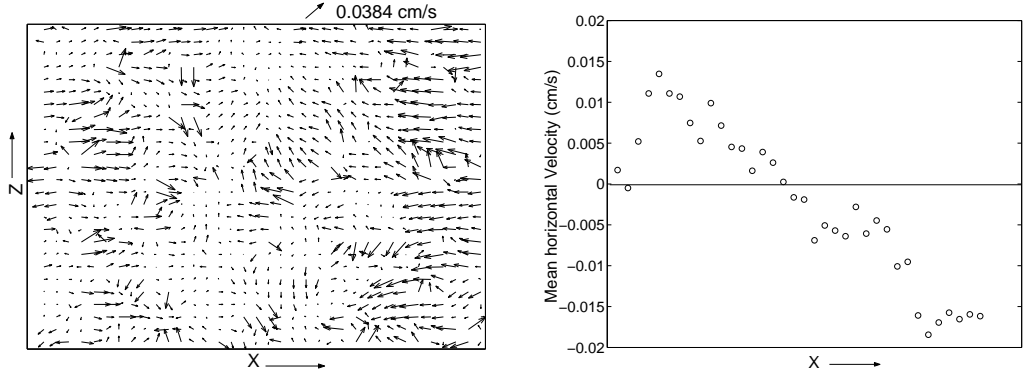


FIGURE 5. 5(a) to 5(d) show the sequence of planform images for $AR=0.65$ and $C_T^o = 3g/l$ (Expt. No. 31jan) at different heights for $Ra_w = 6.39 \times 10^{10}$. The parameter details of image (a) are shown in Table 2. Figure 5(e) shows the side view of plume structure in a vertical plane. 5(f) shows the inferred flow schematic.



(a) The near wall velocity of movement of the lighter fluid estimated by the spatial intensity correlation method of Gendrich & Koochesfahani (1996)

(b) Variation of U velocity averaged in the Z direction with X

FIGURE 6. The near wall velocity of sheet plumes at $Ra_w = 6.39 \times 10^{10}$ in a zoomed portion of Figure 5(a). The image size is 10.8×8.1 cm

et al. (2001)'s measurements of mean wind velocity gives $Pe = 0.13Ra^{0.5}$, which for the present parameter values gives $V_{LS} = 0.02$ cm/s, similar to the present down flow velocities. The present measurements of plume column rise velocities are of the same order as the earlier estimates of large scale flow velocity, confirming the finding that large scale flow is driven by plume columns.

We can also estimate the mean velocity of the large scale circulation from the bulk velocity scale of equation (1.1), using the constant value of $Ra_\delta^{-1/3}$ noticed in Section 3. If $Ra_\delta^{-1/3} = k_1$, equivalent to $Nu \sim Ra^{1/3}$, and if the large scale flow velocity $V_{LS} = k_2 W_*$ (where $k_1 \sim 0.166$ and $k_2 \sim 1$), we get

$$V_{LS} = k_1^{1/3} k_2 (D/Sc)^{1/9} \left[g\beta\Delta C_w H^{3/4} \right]^{4/9}. \quad (4.1)$$

The Reynolds number from equation (4.1) is,

$$Re = \frac{k_1^{1/3} k_2}{2^{4/9}} Ra^{0.44} Sc^{-2/3}, \quad (4.2)$$

with the prefactor 0.4, matches Ra and Pr dependence of Lam *et al.* (2002) and Grossman & Lohse (2002) (Subsections 1.4 and 1.5). A value of $n = 2/7$ in the $Nu \sim Ra^n$ scaling gives $Re \sim Ra^{0.43}$. Further, the Deardorff velocity scale for Figure 5(e) is 0.18 cm/s; the same order as the plume column rise velocity. Hence, Deardorff velocity scale seems to be an appropriate estimate of the mean large scale flow velocity and correctly predicts the Prandtl number dependence. The low Reynolds number of the large scale flow rules out the possibility of a near wall turbulent shear boundary layer created by the large scale circulation.

Figure 6(a) shows the velocities estimated using the spatial intensity correlation technique of Gendrich & Koochesfahani (1996) from a zoomed portion (10.8 cm \times 8.1 cm) of the near wall image of Figure 5(a). The correlation was calculated between two images 5 seconds apart and then averaged over a set of 6 such pairs 0.2 seconds apart. The near wall velocity map of the movement of the lighter fluid clearly shows the presence of a mean shear in the horizontal direction near the left and right walls. Figure 6(b) shows the variation of Z-averaged U velocity with X, calculated from Figure 6(a). The mean

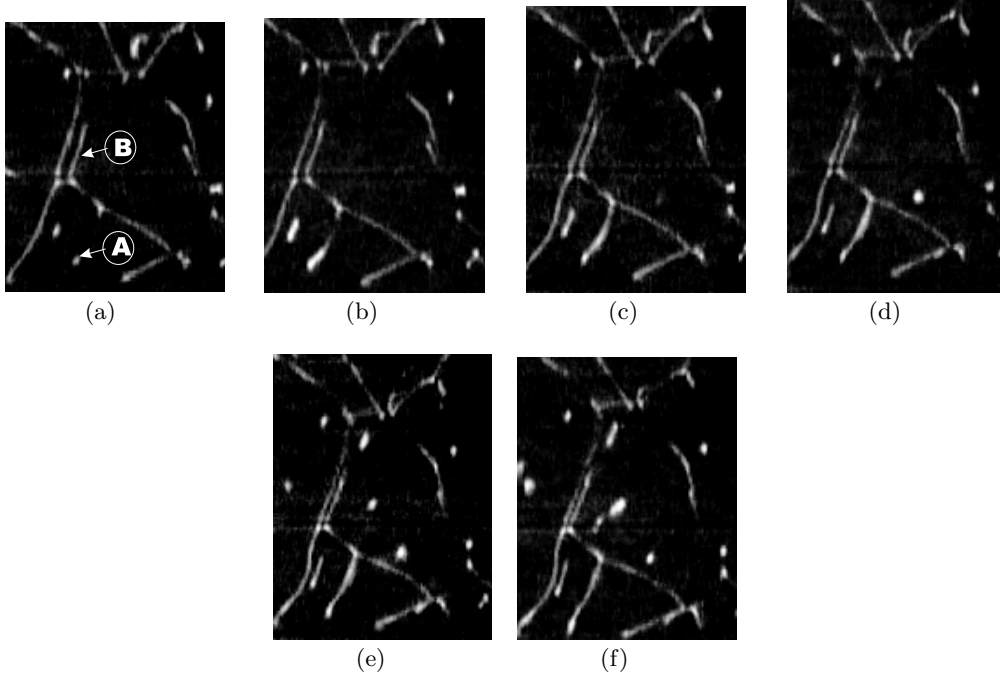


FIGURE 7. Near wall plume dynamics in a weak mean shear region from the center of a structure similar to that in Figure 5(a). The images are two seconds apart, time increasing from (a) to (f) at the same Ra_w as in Figure 6. At point \textcircled{A} in (a) a plume initiates as point and gets elongated with time. At point \textcircled{B} two locally parallel plumes merge.

shear velocity varies almost linearly along the X direction. The velocity in Figure 6(b) represents the average velocity at the laser sheet location due to the mean wind and will be within the velocity boundary layer. Note that the maximum near wall velocity is an order smaller than the plume column rise velocities discussed in Section 4.1.1; the Reynolds number based on the maximum near wall velocity and Z_w is 0.03.

4.1.2. Near wall dynamics

The plume sheets are constantly moving, mostly due to the interaction among themselves. Two main dynamics are observed near the wall:

(a) A new plume gets initiated at a point, usually in a vacant region, and then gets elongated to a sheet.

(b) Adjacent plumes which are parallel and close to each other merge. The merger is due to the entrainment field between the plumes.

As we have seen, the effect of the wind or large scale circulation is to align the sheet plumes in the direction of the shear (RHS and LHS of Figure 5(a)). In regions of shear (created by the mean wind) the elongation of the initiation point is in the direction of shear. The main sheet plume segments also get elongated to touch each other.

In the absence of a wind, as at lower Ra , the plumes are randomly aligned. Figure 7 shows the dynamics in a region where the mean shear is small. The images are taken from the center region of planforms, below the rising plume column, similar to that in Figure 5(a), i.e., the shear predominant areas, having a horizontal mean shear are on the right and left of each image in the figure. The plumes in the low mean shear areas are initiated as points in vacant areas (point A in Figure 7(a)) and gets elongated to

sheets. See the evolution of the plume sheet initiated at point A in Figures 7(a), 7(b) and 7(c). The direction of elongation is probably decided by a combination of the nature of the boundary layer instability, the entrainment flow of the nearby plumes and the effect of the rising plume column. The elongation is at a slower rate compared to the shear predominant areas, the reason why more point plumes are seen in the shear free areas. There are also locally parallel plumes, close to each other, which merge (see point B in Figure 7(a)). The plumes merge in a few seconds, a much smaller time scale compared to the 4 min time scale of the large scale circulation.

The planform structure of Figure 5(a) is observed consistently for about 5 hours from the time of Figure 5(d), ie till $Ra_w \sim 5.1 \times 10^{10}$.

4.2. $Ra_w \sim 10^{11}$

Convection at a higher Rayleigh number (earlier in the experiment) of 2.04×10^{11} in the same setup, (AR = 0.65) shows the planform plume structure of Figure 8(a). Figure 8(c) shows the side view in a vertical plane 2cm from a side wall of the test section, (ie 2cm from the bottom of Figure 8(a)).

Larger number of sheet plumes are seen in Figure 8(a) than in Figure 5(a). The planform displays circular patches of aligned lines originating from a lower plume density area in the center of these patches. The vertical view of Figure 8(c) shows that small near wall plumes merge into upward rising plume columns of larger size. The rising of these plume columns create a downward flow which impinges on the wall, creating the circular, relatively plume free patches seen in Figure 8(a). The aligned lines around the patch in Figure 8(a) are created due to the near wall mean wind, directed radially outward from the plume free patch. This mean wind also sweeps the smaller near wall plumes into the larger plume columns, as seen in the smaller inclined near wall plumes in Figure 8(c). Figure 8(a) shows two large scale flow cells on the left side of the image and one small cell at the bottom right; a schematic of this flow is shown in Figure 8(b). The plume column rise velocity is about 0.3 cm/s (Re=772.7) while the downward velocities are larger at ~ 0.8 cm/s (Re=2060). The correlation of Lam *et al.* (2002) for the present parameters give $Re = 670.3(V_{LS}=0.26$ cm/s). The free fall velocity in the present case when ΔC_w acts over the layer height H is $V_{ff} = 7.14$ cms/s, an over estimate by an order of magnitude from the plume column rise velocities. The Deardorff velocity for Figure 8(c) is 0.31 cm/s, of the same order as the plume column rise velocity. The maximum near wall mean velocity is around 0.06cm/s, larger than the velocity obtained in Figure 6(a) due to the increase in the Rayleigh number; the near wall mean shear increases with increase in Ra_w . This increase seems to have two components viz., the increase in plume columns rise velocities due to the larger driving potentials and the increase due to the reduction in area available for the down flow due to the presence of multiple rising plume columns. The Deardorff velocity correctly estimates the average large scale flow velocity at the higher Rayleigh number also.

The near wall dynamics was similar to that described in Section 4.1.2, but with a shorter time scale. The main differences in the planforms at $Ra_w \sim 10^{11}$ from that at $Ra_w \sim 10^{10}$ are in the large scale circulation cell nature (multiple toroidal cells as against two counter rotating cylindrical cells) and the larger number of plumes at the higher Ra_w .

4.2.1. Changing large scale flow patterns

At the higher Rayleigh numbers, the large scale flow cell patterns are seen to change with time. The various planform images in the order of decreasing Ra_w are shown in Figure 9(a), 8(a), 9(b),9(c),9(d) and 5(a). Table 2 shows the relevant parameters for

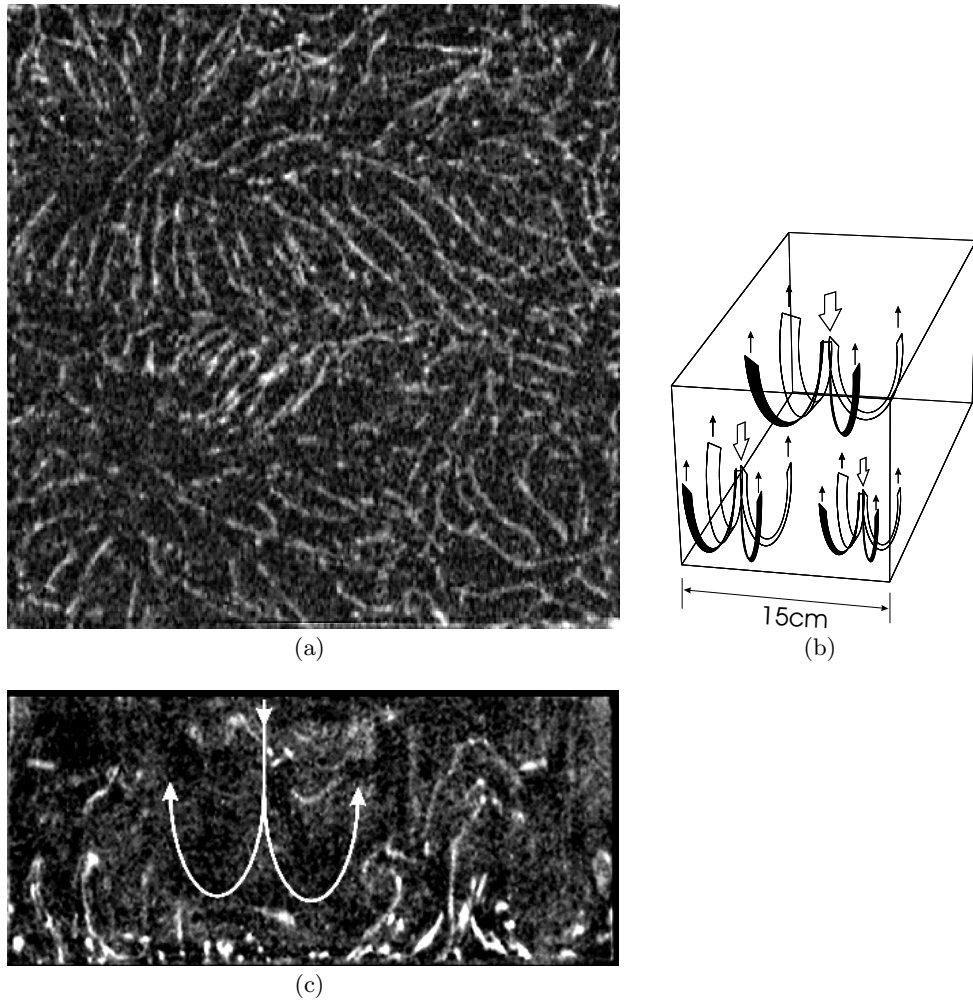


FIGURE 8. Multiple large scale flow cells at $AR=0.65$ and $C_T^o = 10g/l$ (Expt no. 10jan) (a)planform of plume structure at $Ra_w = 2.04 \times 10^{11}$, $\Delta C_w = 3.205g/l$. Image size is 15 cm \times 15 cm. See Table 2 for details of parameters (b) Schematic of the multiple large scale flow cells (c)Side view of plume structure in a vertical plane 2cm from the bottom of Figure 8(a) at $Ra_w = 2.03 \times 10^{11}$, image size is 15 cm \times 6.7 cm

Expt.No.	Figure No.	ΔC_w g/l	Ra_w	Flux (mg/cm ² min)	Ra_q	W_* (cm/sec)	Time (min)
10jan	9(a)	3.26	2.07×10^{11}	0.1147	1.89×10^{14}	0.3123	18.17
10jan	8	3.21	2.04×10^{11}	0.1116	1.83×10^{14}	0.31	40.67
10jan	9(b)	2.94	1.87×10^{11}	0.0997	1.64×10^{14}	0.298	132.17
10jan	9(c)	2.65	1.69×10^{11}	0.088	1.49×10^{14}	0.289	237.67
4feb	9(d)	2.65	1.67×10^{11}	0.09	1.49×10^{14}	0.289	211.5
31jan	5(a)	1.0	6.39×10^{10}	0.0209	3.43×10^{13}	0.177	172.5

TABLE 2. Parameters corresponding to planform structures for $AR=0.65$. The time corresponds to that from the initiation of each experiment

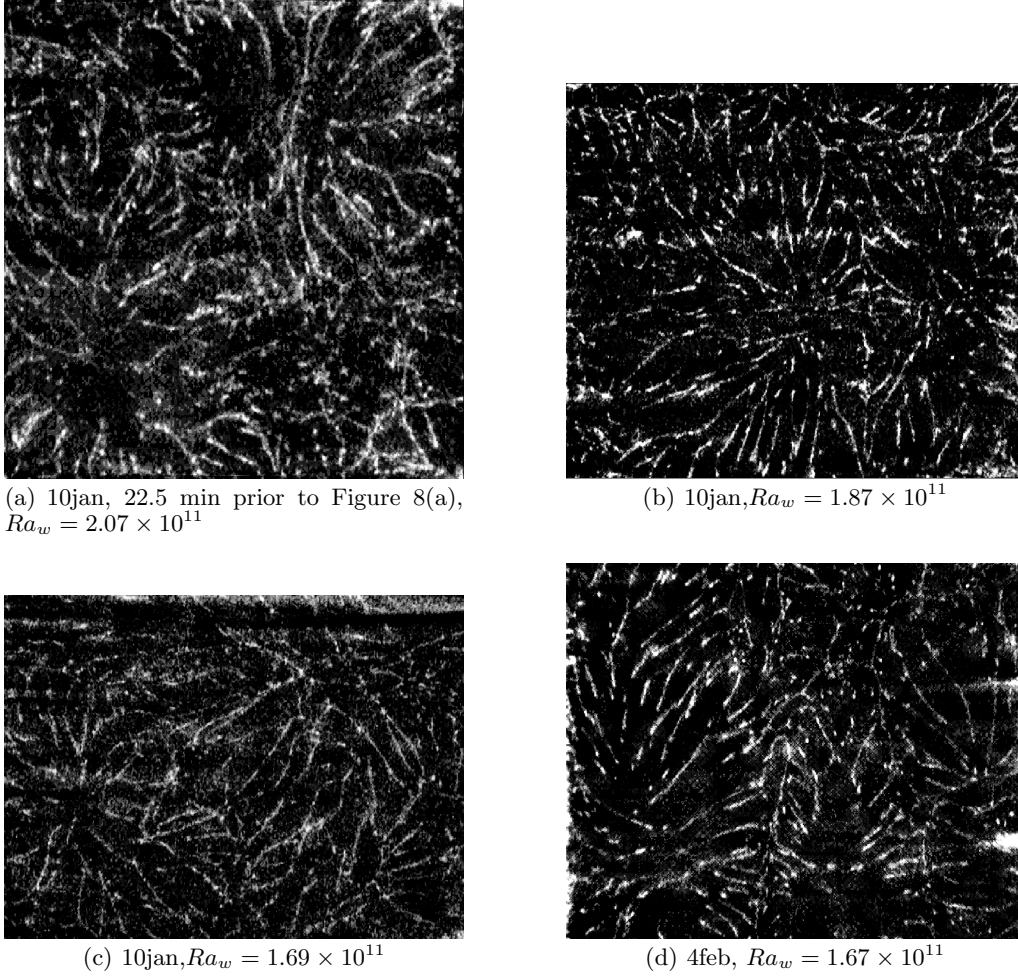


FIGURE 9. planform structure with decreasing Ra_w for AR = 0.65 for experiments with $C_T^o = 10g/l$. Parameters details are shown in Table 2

these images. The entries are arranged as per decreasing Ra_w (or flux Rayleigh number, Ra_q).

Figure 9(a) shows the planform plume structure 22.5 minutes prior to the image shown in Figure 8(a). The circulation cell at the top right in Figure 9(a) has shifted to the top left in Figure 8(a). The characteristic time of one large scale flow circulation spanning the cell volume ($H/W_* \sim 1$ min) and the time scale associated with the near wall merging of sheet plumes (\sim few seconds) are much smaller than the time scale for the shifting of large scale flow cells. The time scale for the bulk concentration change $\Delta C / \frac{dC_T}{dt}$ is much larger (~ 600 min); (quasi)statistical stationary nature can hence be assumed. Observations of changing large scale flow direction at similar Ra have also been made by Niemela *et al.* (2001).

Figure 9(b) shows the planform after about $1\frac{1}{2}$ hours after the start of the experiment. The image shows the signature of a large scale circulation impinging at the center of the cross section area. The planform shifts between multiple cells and single cells (formed due to merging of multiple cells) with decreasing Ra_w . One important feature that is observed is the reduction in number of plume sheets or the increase in the average spac-

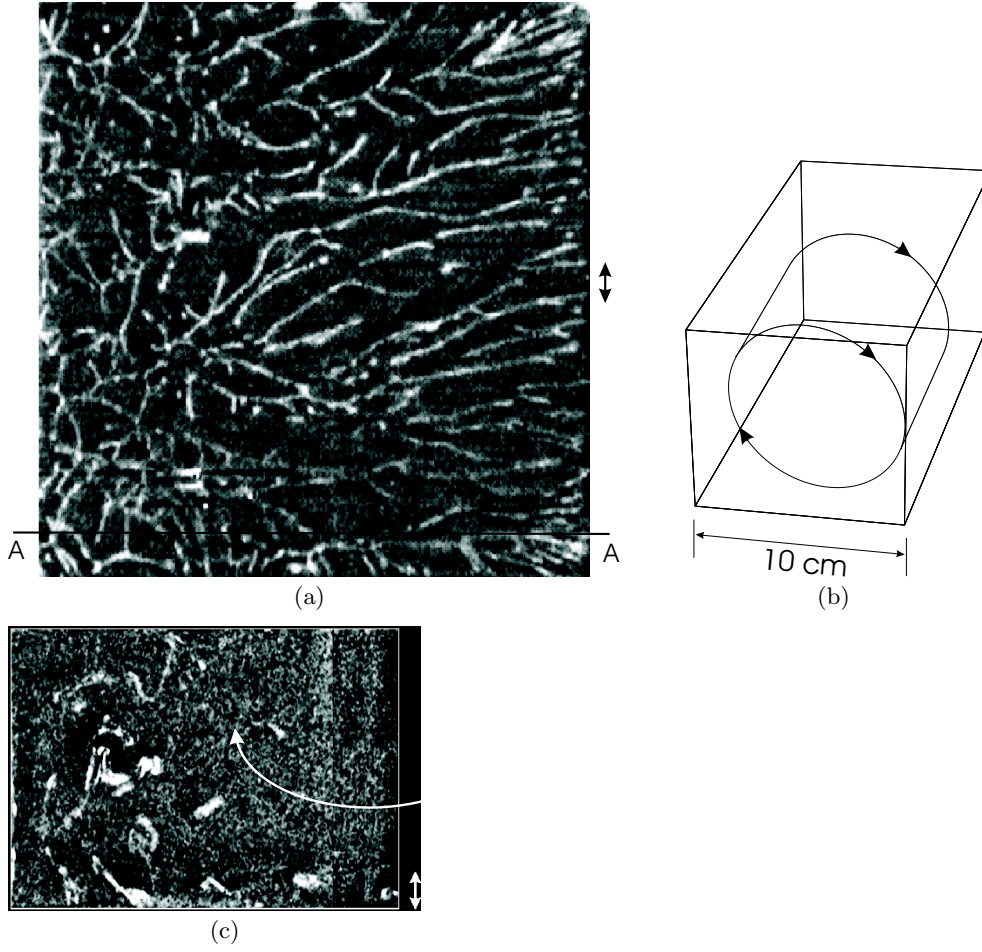


FIGURE 10. Single large scale flow cell at $AR=0.435$ and $C_T^o = 10\text{g/l}$ (Expt no. 18dec) (a)planform of plume structure at $Ra_w = 2.0340 \times 10^{11}$, $\frac{\Delta\rho}{\rho_w} = 2.3 \times 10^{-3}$ Image size is $10\text{cm} \times 10\text{cm}$ (b)Schematic of the large scale flow cell (c)Vertical plume structure at $Ra_w = 2.05 \times 10^{11}$, Image size is $7.25\text{cm} \times 4.67\text{cm}$

ing between adjacent plumes with reduction in Rayleigh number. For example compare figures 9(a), 9(d) and 5(a). At around the same Ra_w as in Figure 9(c), in another experiment, we notice the beginning of the breaking up of the circular cells to give arrays of aligned plumes as shown in Figure 9(d). This might be the possible route to the plan forms obtained at the beginning of low concentration ($C_T^o = 3\text{g/l}$) experiments shown in Figure 5(a).

5. Plume structure at $AR=0.435$

The planform plume structure with $H = 23\text{cm}$ and the test section cross section of $10\text{cm} \times 10\text{cm}$ (i.e. $AR = 0.435$) at $Ra_w = 2.03 \times 10^{11}$ is shown in Figure 10(a). The image shows the full test section cross section. The presence of aligned plumes on the right hand side of the figure and the progressive decrease of alignment from the right to the left indicates a single, clockwise, large scale flow cell spanning the full test section

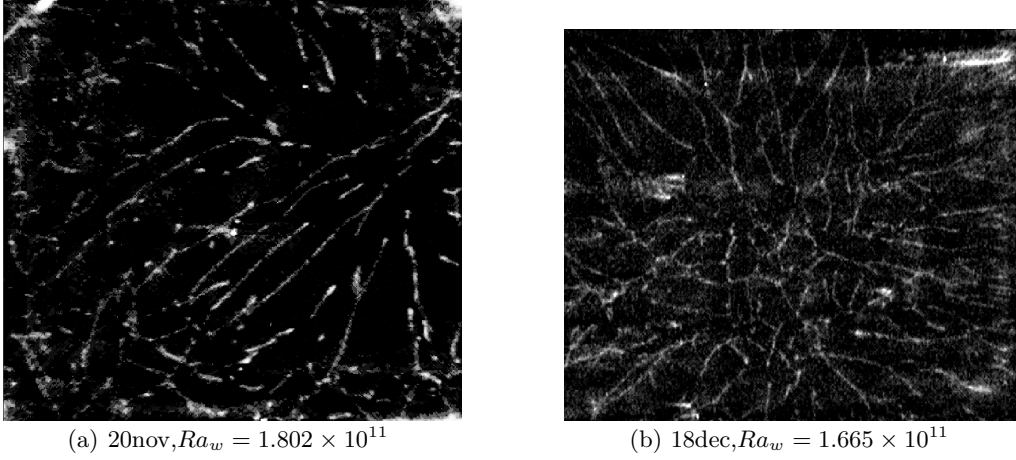


FIGURE 11. planform structure with decreasing Ra_w for $AR = 0.435$. The experiment number is shown below each figure. Parameters details are shown in Table 3. In Figure 11(a) the mean wind is along the diagonal starting from the top right corner. In Figure 11(b) the large scale flow is toroidal, with a column rising in the centre.

Expt. No.	Figure	ΔC_w	$Ra_w \times 10^{11}$	q mg/cm ² /min	$Ra_q \times 10^{14}$	W_* (cm/sec)	Time (min)	Orientation
18dec	10(a)	3.2	2.03	0.1094	1.8	0.31	20.17	Parallel to wall
20nov	11(a)	2.83	1.8	0.079	1.3	0.276	209.83	Diagonal
18dec	11(b)	2.62	1.67	0.08	1.32	0.2773	263.17	Rising column at center

TABLE 3. Parameters corresponding to planform structures for $AR=0.435$

cross section, shown schematically in Figure 10(b). It is inferred that the large scale flow spans the whole height of the test section as motion at the top surface of the liquid is observed to be in the opposite direction to the mean shear near the membrane surface. Figure 10(c) shows the plume structure in a vertical plane. Plumes combine and rise along the left wall, feeding the mean circulation, which in turn sweeps the near wall plumes from the right to the left. The major difference from the structure for $AR=0.65$ at similar Rayleigh numbers, shown in Figure 8(a), is the absence of multiple large scale flow cells.

In addition to a single cell parallel to the walls (Figure 10(a)), a variety of planforms and large scale flow patterns were observed. The large scale circulation in Figure 11(a) is rotating clockwise, impinging on the top right corner and creating a mean shear near the membrane along the diagonal from top right to bottom left. In most cases, it is noticed that a relatively plume free area is created when the large scale flow is aligned along the diagonal (see Figure 11(a)). The two adjacent side walls focus the overall circulation into a downward moving column of fluid in the corner, which creates the plume free area with near wall mean shear direction away from this patch. At lower driving potentials, in some experiments, the plumes were seen to combine at the center, resulting in a column of rising fluid at the center of the cross section, creating a toroidal structure of the large scale flow, as seen in Figure 11(b). Table 3 shows the relevant parameters corresponding to each image. At further low Ra_w , the alignment becomes quite weak, the plume sheets are randomly oriented, the lateral movement of plumes due to the entrainment effect of

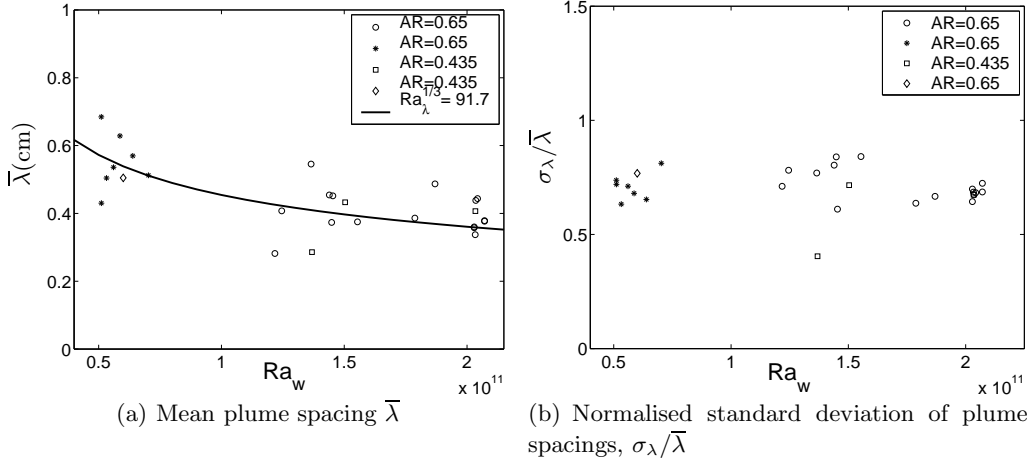


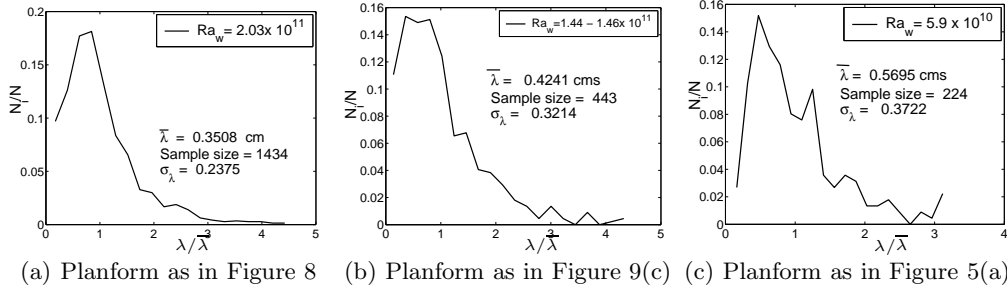
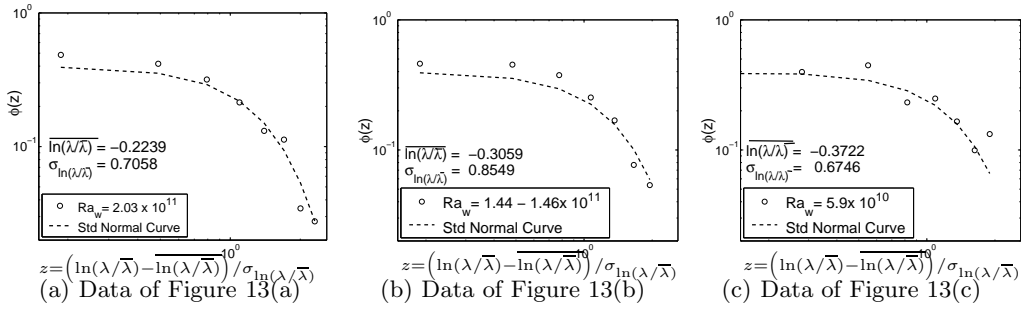
FIGURE 12. Variation of the mean plume spacings and the normalised standard deviation of the plume spacings with the Rayleigh number. The line in (a) is a prediction from the model discussed in Section 7.1

nearby plumes becomes larger, and the planform structure looks similar to that observed by Theerthan & Arakeri (2000).

The process of shifting large scale flow direction is very slow compared to the time period of one circulation of the mean wind. The last column of Table 3 shows the time of the image from the start of the experiment. The time period between the clear change in structures in the experiment of 18dec was about an hour. There are transition planform structures in between the images shown in Figures 10(a) to 11(b) which are a combination of the above clear regimes. These are expected to occur when the large scale flow is switching from one type to another.

6. Plume spacing distribution

The sheet plumes are the result of the gravitational instability of the boundary layers in between them; the measurement of the spacings of the sheet plumes helps us to form inferences about the nature of these boundary layers in Section 7. The plume spacings are calculated from the co-ordinates of adjacent plume sheets input manually by mouse clicks. The coordinates are selected judiciously so that the spacings are measured normal to the plume sheets wherever possible. The measurements are made all over the image to cover the whole range of spacings in the image. As the plume sheets are not always parallel, the location of measurement would affect the calculated spacings. However, with a large enough sample, the mean spacing and the distribution of spacings would be representative of the actual spacing distribution in the planform image. The average number of samples in each image varied depending on the number of plume sheets in the image. At the highest Ra_w , for planforms similar to that in Figure 8, the average sample size is about 500. The number of plumes and thus the sample size reduced with decrease in Ra_w . The sample size at the lowest Ra_w is about 225. The statistics are improved by taking the spacings measured from about three images a short time apart so that the images are almost at the same Ra_w . The outliers in the data are removed using the criteria suggested by Frank & Althoen (2002) for skewed distributions.

FIGURE 13. Histogram of plume spacings of different planforms at decreasing Ra_w FIGURE 14. Probability density function of logarithm of plume spacings in the standardised form along with standard normal curve at decreasing Ra_w

6.1. Mean spacing variation

Figure 12(a) shows the variation of mean plume spacing, $\bar{\lambda}$ with Ra_w . The plot shows the spacing measurements from the low and the high concentration experiments in the two aspect ratio tanks. The solid line in the figures is a theoretical prediction explained in Section 7.1. The mean plume spacing clearly reduces with increase in Ra_w . No clear dependence on AR can be made out. The plot also shows that there is about 25% variation in the spacings at the same Ra_w . This variation is expected to be due to the human error in measurements, insufficient sample size and differences in location of measurement between the images.

Figure 12(b) shows the dependence of the normalised standard deviation of the plume spacings $\sigma_\lambda/\bar{\lambda}$, on Ra_w . $\sigma_\lambda/\bar{\lambda}$ is about 0.7; the variance increases proportionally to the mean plume spacing. The increase in σ_λ with decrease in Ra_w shows that the plume spacings become spread out over a wider range at lower Rayleigh numbers. Thus an increase in Rayleigh number (and hence increase in flux) results in plumes which are closely spaced (lower mean spacing) and with less variation in the spacing between plumes (less σ_λ). The number of plumes per unit area increases with Ra_w . Note that this observation is not in agreement with the recent modification suggested by Grossman & Lohse (2004) to their earlier theory.

6.2. Spacing statistics

The histograms of the plume spacings (normalised with the mean) at three Ra_w are shown in Figures 13(a) to 13(c). The Ra_w values cover the range shown in Figure 12(a). Figure 13(a) is obtained from the spacing measurements of three images 15 seconds apart so that the Ra_w change is negligible. The planform for this statistics corresponds to Figure 8. The spacing measurements from 3 images about 2 minutes apart are used

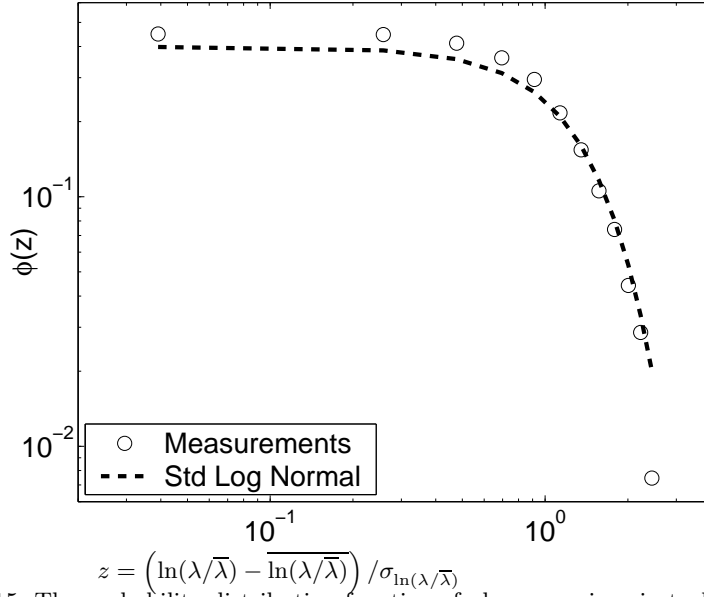


FIGURE 15. The probability distribution function of plume spacings in turbulent free convection for $4 \times 10^{10} \leq Ra_w \leq 2 \times 10^{11}$ at $Sc = 602$

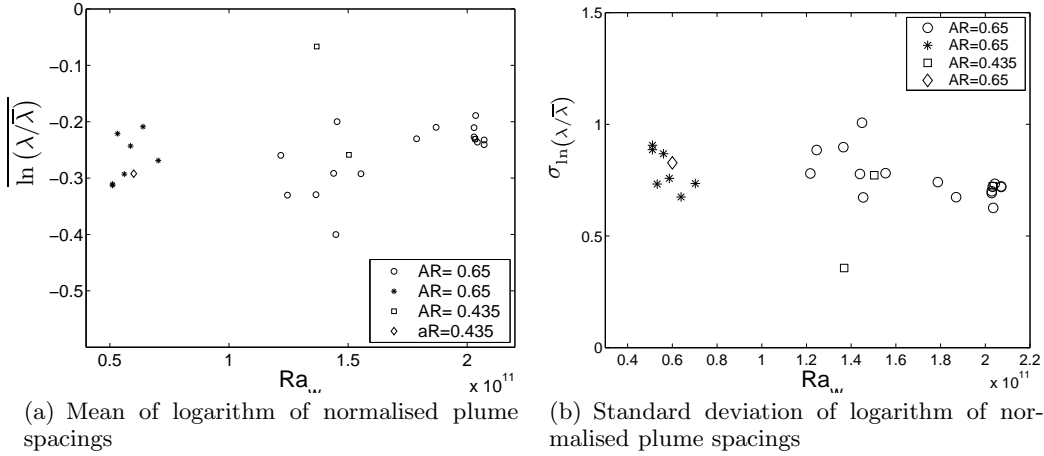


FIGURE 16. Variation of the standardising variables, $\overline{\ln(\lambda/\bar{\lambda})}$ and $\sigma_{\ln(\lambda/\bar{\lambda})}$, in Figure 15 with Rayleigh number

for calculating Figure 13(b). The planform corresponds approximately to that shown in Figure 9(c). Figure 13(c) is the statistics from a single image of the low concentration experiment, which exhibits plan form structure similar to that in Figure 5(a). The spiky nature of Figure 13(c) is due to the low sampling size.

Figure 13 shows that even though the mean and the variance of plume spacings increase with decreasing Ra_w , all the histograms exhibit the same form of a skewed distribution with a long tail. This common form of the histograms is seen more clearly when the logarithm of the normalised plume spacings is plotted in the standard form. Figure 14 shows $\left(\ln(\lambda/\bar{\lambda}) - \overline{\ln(\lambda/\bar{\lambda})} \right) / \sigma_{\ln(\lambda/\bar{\lambda})}$ plotted as a probability density function; here, $\overline{\ln(\lambda/\bar{\lambda})} =$ mean of $\ln(\lambda/\bar{\lambda})$ and σ indicates variance. The standard normal probability density func-

tion, $\frac{1}{\sqrt{2\pi}}e^{-\frac{\ln(\lambda/\bar{\lambda})^2}{2}}$, shown in the figures shows good agreement with the experimental measurements. Figure 14 hence shows that the probability distribution function of the plume spacings has a common log-normal form for the three visually different planform structures at the three different Ra_w . This common form of the probability distribution function was seen for all the images analysed.

Based on this common form of the distribution function, we combine the standardised form of $\ln(\lambda/\bar{\lambda})$ at different Ra_w from all the images analysed in Figure 12(a), and plot the probability distribution of 7355 spacings (Figure 15). The standard normal probability distribution function fits the data quite well. Thus, the probability density function of plume spacings in turbulent free convection between $4 \times 10^{10} \leq Ra_w \leq 2 \times 10^{11}$ at $Sc = 602$ can be approximated by the standard log-normal curve. The parameters that describe the standard log-normal curve are the mean $\ln(\lambda/\bar{\lambda})$, and the standard deviation $\sigma_{\ln(\lambda/\bar{\lambda})}$. The variation of these parameters for the present experimental range is shown in Figure 16. The plume spacing distribution in the present experiments is completely described by the plots in Figures 15, 16(a) and 16(b). We also found that all the plume structures have a common underlying multifractal spectrum of singularities, which was proposed to be due to the common generating mechanism of these structures (Puthenveetil & Arakeri 2005). The connections of the common log-normal spacings distribution to the common multifractal nature of the plume structure needs to be investigated.

7. The hypothesis of laminar natural convection boundary layers and its verification by a near wall model

The literature review in Sections 1.2, 1.3, and 1.4 showed that there is considerable controversy about the nature of boundary layers in high Rayleigh number turbulent free convection. The planforms of the near wall plume structure from the present study show that the dominant near wall coherent structures in high Ra , high Sc turbulent convection are sheet plumes. These plumes are log-normally distributed about a mean spacing and move about laterally on the horizontal surface. Plumes are the result of gravitational instability of the boundary layers between them. We hypothesize that the boundary layers between the sheet plumes to be laminar natural convection boundary layers. These boundary layers grow perpendicular to the plume sheets, driven by the horizontal pressure difference between the heavier ambient and the lighter boundary layer fluid. The predominant velocity in these boundary layers are horizontal. At some thickness of the boundary layer, when the Rayleigh number based on the boundary layer thickness is of order 1000, gravitational instability sets in, the boundary layer turns upward to give rise to a sheet plume. These sheet plumes turn to mushroom type structures at a very short height from the wall, gets organised into columns of lighter fluid, which drives the large scale circulation (Figure 17(a)17(b)). The large scale flow in turn organise the near wall sheet plumes as well as the column of lighter fluid.

The laminar natural convection boundary layer hypothesis can be justified by two reasons. Firstly, the boundary layers before becoming unstable to give rise to plumes could be expected to be laminar. Secondly, as we are dealing with near wall flow where viscous effects are important, especially at large Prandtl numbers, the Reynolds numbers would be low. The Reynolds number based on the thickness of the fluid layer and the Deardorff's outer velocity scale would be 800. The Reynolds number based on near wall scales, given by Townsend's velocity scales (equation(1.2)), and mean plume spacing (~ 0.6 cm) is 0.8.

We validate the hypothesis of laminar natural convection boundary layers in the present

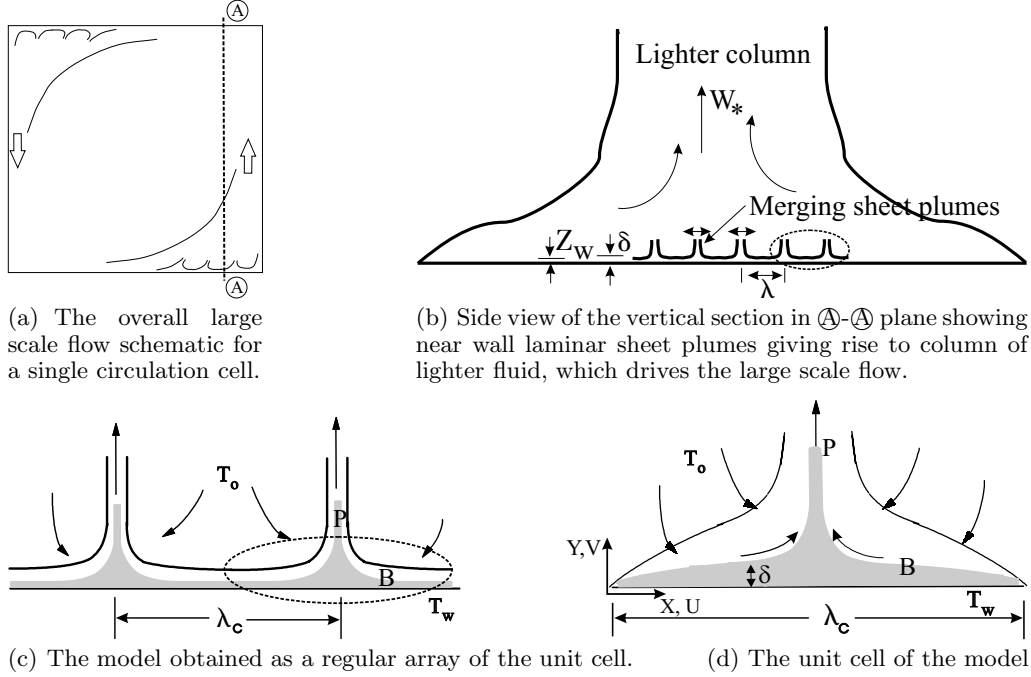


FIGURE 17. Schematic of the large scale flow and the near wall model. B indicates boundary layer and P indicates plume. The lines show the edge of the velocity boundary layer and the shaded regions show the thermal boundary layer and plume. The dashed ellipse in (b) is shown as (c) and the dashed ellipse in (c) is shown as (d)

experiments by comparing the prediction of the mean plume spacing from a model constructed from similarity solutions of laminar natural convection boundary layers with the experimental measurements. The present model is an extension of the model of Theerthan & Arakeri (1998) to high Prandtl number.

7.1. A near wall model for mean plume spacing at high Prandtl numbers from similarity solutions

We model the observed plume structure as a regular array of two dimensional laminar natural convection sheet plumes that are spaced apart by a mean plume spacing λ_c . This regular array of 'unit cells' of two boundary layers giving rise to a sheet plume is expected to approximate the near wall dynamics. The schematic of the unit cell is shown in Figure 17(b), where B represents the boundary layer and P the plume. The model obtained as a regular array of this unit cell is schematically shown in Figure 17(a). The similarity solutions of Rotem & Classen (1969) for laminar natural convection boundary layer over a horizontal surface for the asymptotic case of $Pr \rightarrow \infty$ are used to approximate the near wall boundary layers. We use temperature instead of concentration for convenience of using Rotem & Classen (1969)'s notations; both are equivalent. From this model flow field, the expression for the mean values of any variable is calculated by averaging the similarity solutions over one unit cell. Equating the expression for the mean heat flux from the model to the correlation of Goldstein & See (1990), an expression for the mean plume spacing is obtained.

The major assumptions used in this model are:

(a) Near wall dynamics in turbulent convection can be approximated by that of laminar natural convection boundary layers.

- (b) A two dimensional model approximates the three dimensional near wall dynamics.
(c) The outer flow does not influence the flow near the wall.

The justification for the first assumption was described earlier. The second assumption can be justified because the near wall flow is locally two dimensional due to the presence of sheet plumes. Besides, visualisations show that the neighbouring plumes are often nearly parallel. The outer flow affects the near wall dynamics at very high Ra . As noticed from visualisations, the first order effect of outer flow is to align the sheet plumes in the direction of the mean wind. The similarity solutions do not consider the effect of this external forcing on the boundary layers. But, as the effect of large scale flow on the flux is weak, the predicted mean plume spacing - estimated by equating the flux - is expected to be fairly accurate. Further, at high Prandtl numbers the effect of large scale flow is likely to be weak due to the reasons discussed in Section 1.5.

7.1.1. Similarity solutions for laminar natural convection boundary layer as $Pr \rightarrow \infty$

For indirect laminar natural convection boundary layers as $Pr \rightarrow \infty$, Rotem & Classen (1969) (RC hereafter) introduced

$$\begin{aligned} \tilde{y} &= y Ra_c^{1/5}, \quad \tilde{u} = u Gr_c^{-2/5} Pr^{3/5}, \\ \tilde{v} &= v Gr_c^{-1/5} Pr^{4/5}, \quad \tilde{\pi} = \pi Gr_c^{-4/5} Pr^{1/5}, \end{aligned} \quad (7.1)$$

as the asymptotically stretched inner variables that makes the thickness of the thermal boundary layer unity in the stretched co-ordinates. The normalised variables in equation (7.1) are

$$\begin{aligned} y &= \frac{Y}{L}, \quad x = \frac{X}{L}, \quad u = \frac{U}{\nu/L}, \quad v = \frac{V}{\nu/L}, \\ \pi &= \frac{P - P_\infty}{\rho_\infty \nu^2 / L^2} + \frac{gL^3 Y}{\nu^2}, \quad \theta = \frac{T - T_\infty}{T_w - T_\infty} \end{aligned} \quad (7.2)$$

where the uppercase letters denote dimensional variables, of the co-ordinate system shown in Figure 17, and L is the characteristic horizontal length. $L = \lambda_c/2$ in our analysis, where, $\lambda_c/2$ is the critical length at which the boundary layer turns into a plume. $Ra_c = g\beta(\lambda_c/2)^3 \Delta T_w / \nu \alpha$ is the Rayleigh number based on half the plume spacing and the corresponding Grashoff number, $Gr_c = Ra_c / Pr$. Writing the Continuity, Navier-Stokes and Energy equation in terms of these inner variables and dropping terms of order $\frac{1}{Pr}$ and $\frac{1}{Ra^{2/5}}$, the thermal boundary layer equations in the $Pr \rightarrow \infty$ limit are obtained as equations (29) to (32) of RC. These equations are independent of the Prandtl number. The inertial terms drop out from the momentum equations. The horizontal momentum equation shows a balance of viscous resistance to the driving horizontal motion pressure gradient while the vertical momentum equation expresses a balance of the vertical pressure change and the buoyancy force.

The inner similarity variable for the thermal boundary layer,

$$\tilde{\eta}_1 = \tilde{y} x^{-2/5} \quad (7.3)$$

is used to introduce similarity transformations. The similarity transformation for the stream function, motion pressure and temperature are

$$\tilde{\psi} = x^{3/5} \tilde{F}_1(\tilde{\eta}_1), \quad \tilde{\pi} = x^{2/5} \tilde{G}_1(\tilde{\eta}_1), \quad \theta = H_1(\tilde{\eta}_1), \quad (7.4)$$

In RC, the boundary layer equations are now transformed into ordinary differential equations that are solved numerically for the velocity function \tilde{F}_1 , the pressure function \tilde{G}_1 and the temperature function \tilde{H}_1 . The solutions are given as functions of $\tilde{\eta}_1$ in Figures 4 and 5, and tabulated in Tables 2a and 2b in RC.

As Pr is not a variable in the boundary layer equations, the solutions are accurate only to factor of $Pr^{a/5}$ where, a is an integer. However, Figures 4 and 5 of RC show that the plots of $\tilde{H}_1(\tilde{\eta}_1)$ and $\tilde{G}_1(\tilde{\eta}_1)$ at $Pr = 5$ to ∞ is not a strong function of Pr . Hence the $Pr \rightarrow \infty$ solutions could be expected to hold for large Prandtl numbers.

7.1.2. Averaging procedure

Using the notation of RC, with the horizontal length scale L chosen as $\lambda_c/2$, the similarity variable can be written as

$$\tilde{\eta}_1 = \frac{Y}{\lambda_c/2} Ra_c^{1/5} \left(\frac{X}{\lambda_c/2} \right)^{-2/5}, \quad (7.5)$$

The non-dimensional plume spacing is given by

$$\frac{\lambda_c}{Z_w} = Ra_{\lambda_c}^{1/3} \quad (7.6)$$

where $Z_w = (\nu\alpha/g\beta\Delta T_w)^{1/3}$ is the wall length scale in turbulent convection given by equation (1.3) and Ra_{λ_c} , the Rayleigh number based on the critical plume spacing λ_c is equal to $8Ra_c$.

The mean of any quantity is obtained by taking the spatial average over one unit cell. The mean, denoted by $\langle \phi \rangle$, of any variable ϕ is

$$\langle \phi \rangle = \frac{1}{\lambda_c} \int_0^{\lambda_c} \phi(X, Y) dX = \frac{2}{\lambda_c} \int_0^{\frac{\lambda_c}{2}} \phi(X, Y) dX \quad (7.7)$$

As $dX = \frac{\lambda_c}{2} dx$ from (7.2) and $dx = -\frac{5}{2} \frac{x^{7/5}}{y} d\tilde{\eta}_1$ from (7.3), a change of variable from X to $\tilde{\eta}_1$ in (7.7) can be obtained using

$$dX = -\frac{5}{2} \frac{\lambda_c}{2} \tilde{y}^{5/2} \tilde{\eta}_1^{-7/2} d\tilde{\eta}_1 \quad (7.8)$$

The limits of integration is changed to $\tilde{\eta}_1 = \infty$ to $\tilde{\eta}_{1c}$ where $\tilde{\eta}_{1c} = \tilde{\eta}_1|_{X=\lambda_c/2} = \tilde{y}$, to obtain

$$\langle \phi \rangle = \frac{5}{2} \tilde{y}^{5/2} \int_{\tilde{y}}^{\infty} \tilde{\eta}_1^{-7/2} \tilde{\phi}_1(\tilde{\eta}_1) d\tilde{\eta}_1 \quad (7.9)$$

As $\tilde{y}^{5/2} = 2 \left(\frac{Y}{\lambda_c} \right)^{5/2} Ra_{\lambda_c}^{1/2}$ from (7.1), the mean value of any variable can finally be expressed in terms of the similarity variable $\tilde{\eta}_1$ as

$$\langle \phi \rangle = 5 \left(\frac{Y}{\lambda_c} \right)^{5/2} Ra_{\lambda_c}^{1/2} \int_{\tilde{\eta}_{1c}}^{\infty} \tilde{\eta}_1^{-7/2} \tilde{\phi}_1(\tilde{\eta}_1) d\tilde{\eta}_1 \quad (7.10)$$

For example, substituting the temperature function $\theta = \tilde{H}_1(\tilde{\eta}_1)$ from RC for $\tilde{\phi}_1(\tilde{\eta}_1)$ in (7.10), the expression for the mean temperature distribution in the boundary layer is obtained as,

$$\langle \theta \rangle = 5 \left(\frac{Y}{\lambda_c} \right)^{5/2} Ra_{\lambda_c}^{1/2} \int_{\tilde{y}}^{\infty} \tilde{\eta}_1^{-7/2} \tilde{H}_1(\tilde{\eta}_1) d\tilde{\eta}_1 \quad (7.11)$$

Similar expressions for the velocities can also be obtained.

7.1.3. Boundary layer thickness

The thermal boundary layer thickness can be estimated from the similarity variable given by (7.5) as

$$\frac{\delta}{\lambda_c} = \tilde{\eta}_{1\delta} Ra_{\lambda_c}^{-1/5} \left(\frac{X}{\lambda_c} \right)^{2/5} \quad (7.12)$$

where, $\tilde{\eta}_{1\delta} = 3.5$, is the value of the similarity variable $\tilde{\eta}_1$ at the boundary layer thickness. We have taken the boundary layer thickness as the point at which $\theta = \tilde{H}_1(\tilde{\eta}_1) = 0.02$. The critical boundary layer thickness δ_c is when $X = \lambda_c/2$ in equation (7.12). The Rayleigh number based on δ_c , $Ra_{\delta_c} = \frac{g\beta\Delta T_w \delta_c^3}{\nu\alpha}$ can hence be expressed as,

$$Ra_{\delta_c} = 2^{-6/5} \tilde{\eta}_{1\delta}^3 Ra_{\lambda_c}^{2/5} \quad (7.13)$$

7.1.4. Heat flux

The heat flux is given by

$$Q = -k_f \left. \frac{\partial T}{\partial Y} \right|_{Y=0} \quad (7.14)$$

Combining $dY = dy(\lambda_c/2)$ from (7.2), $d\tilde{y} = dyRa_c^{1/5}$ from (7.1) and $d\tilde{\eta}_1 = d\tilde{y}x^{-2/5}$ from (7.3), the relation for change of variables from dY to $d\tilde{\eta}_1$ in (7.14) is obtained as

$$dY = \frac{\lambda_c}{2} Ra_c^{-1/5} x^{2/5} d\tilde{\eta}_1 \quad (7.15)$$

Transforming the variable from Y to $\tilde{\eta}_1$ in (7.14), the local value of flux can be expressed as

$$\tilde{Q}_1(\tilde{\eta}_1) = -k_f Ra_c^{1/5} \frac{\tilde{\eta}_1}{\tilde{y}} \frac{\Delta T_w}{\lambda_c/2} \tilde{H}'_1(0) \quad (7.16)$$

Substituting \tilde{Q}_1 from (7.16) for $\tilde{\phi}_1$ in (7.10), and simplifying, the mean value of flux is obtained as

$$\langle Q \rangle = -\frac{5 \times 2^{2/5}}{3} k_f \frac{\Delta T_w}{\lambda_c} Ra_{\lambda_c}^{1/5} \tilde{H}'_1(0) \quad (7.17)$$

Replacing $\lambda_c = Ra_{\lambda_c}^{1/3} \left(\frac{\nu\alpha}{g\beta\Delta T_w} \right)^{1/3}$ in (7.17), the average heat flux scales as the ratio of the characteristic temperature ΔT_w over the characteristic wall length scale Z_w , and is given by

$$\langle Q \rangle = -\frac{5 \times 2^{2/5}}{3} Ra_{\lambda_c}^{-2/15} \tilde{H}'_1(0) k_f \frac{\Delta T_w}{Z_w} \Rightarrow Ra_{\delta}^{-1/3} = -\frac{5 \times 2^{2/5}}{3} Ra_{\lambda_c}^{-2/15} \tilde{H}'_1(0) \quad (7.18)$$

Note that this equation shows the 4/3 power law observed in turbulent convection. The amount of heat (W/m) that feeds the plume is $\langle Q \rangle \lambda_c$.

The Nusselt number, $Nu = \frac{\langle Q \rangle}{k_f \frac{\Delta T}{H}}$ for Rayleigh-Bénard convection can be expressed in terms of Ra_{λ_c} from equation (7.18) as,

$$Nu = -\frac{5 \times 2^{-14/15}}{3} Ra_{\lambda_c}^{-2/15} Ra_{\lambda_c}^{1/3} \tilde{H}'_1(0) \quad (7.19)$$

where, $Ra = \frac{g\beta\Delta T H^3}{\nu\alpha}$ is the Rayleigh number based on H , the distance between the plates, and the temperature difference between the plates, ΔT . The Nusselt number expression shows the $Ra^{1/3}$ scaling.

RC's asymptotic solutions for $Pr \rightarrow \infty$ give $\tilde{H}'_1(0) = -0.4602$. Figure 5 of RC show the plots of \tilde{H}_1 Vs $\tilde{\eta}_1$ for $Pr = 5, 10$ and ∞ and do not show much difference.

7.1.5. Evaluation of plume spacing

The mean plume spacing is estimated by equating the Nusselt number expression (7.19) given by the model, with the Nusselt number correlation of Goldstein & See (1990) for Rayleigh - Bénard convection at Prandtl number of 2750 in the Rayleigh number range $10^9 < Ra < 10^{14}$. Goldstein & See (1990)'s results of

$$Sh = 0.0659 Ra^{1/3} \quad (7.20)$$

were chosen as (a) the correlation shows the same Rayleigh number dependence as the model, (b) the Rayleigh number in the present experiments matches with the range of Goldstein's, and (c) the non-dimensional fluxes $Ra_\delta^{-1/3}$ in Goldstein's and in the present experiments are similar (cf. Figure 4), even if the Prandtl numbers are different.

Equating (7.20) with (7.19), gives the non-dimensional plume spacing as

$$Ra_{\lambda_c}^{1/3} = \lambda_c / Z_w = 91.7 \simeq 92 \quad (7.21)$$

Equation (7.21) shows that the non dimensional mean plume spacing is a constant in turbulent natural convection over horizontal surfaces. Higher driving potentials, resulting in higher flux, give rise to lower mean plume spacing so that $\lambda \Delta T_w^{1/3}$ is a constant for a given fluid, or $\lambda/H \simeq 116 Ra^{-1/3}$. The mean plume spacing calculated from equation (7.21) is plotted with the experimental measurements in Figure 12(a) and shows satisfactory agreement.

An alternate normalised plume spacings can be obtained as $\lambda_c / \left(\frac{\alpha \nu k_f}{g \beta Q} \right)^{1/4} = Ra_{q_{\lambda_c}}^{1/4}$, where the flux Rayleigh number based on plume spacing,

$$Ra_{q_{\lambda_c}} = \frac{g \beta Q \lambda_c^4}{\alpha \nu k_f}. \quad (7.22)$$

Note that $(\alpha^3 / g \beta q)^{1/4}$ is the Townsend (1959)'s near wall length scale for turbulent convection. Using the expression (7.18) for the flux in equation (7.22) and the value of $Ra_{\lambda_c}^{1/3}$ from equation (7.21), the plume spacing, normalised by the flux length scale, can be expressed as

$$Ra_{q_{\lambda_c}}^{1/4} = \frac{\lambda_c}{Z_w S c^{1/4}} = 58.54 \simeq 59 \quad (7.23)$$

Figure 18 shows the measured mean plume spacings from the experimental planform images along with the theoretical relation of (7.23). The agreement is satisfactory. Therefore, higher flux results in more closely spaced plumes so that $\lambda_c q^{1/4}$ is a constant for a given fluid.

The model and the spacing statistics specify the plume structure at different Ra_w . As the ratio of $\ln(\lambda/\bar{\lambda})$ to $\sigma_{\ln(\lambda/\bar{\lambda})}$ is about -0.325 from Figure 16, Figure 15, along with Figure 16(b) specify the distribution of $\lambda/\bar{\lambda}$, as a function of Ra_w . Hence, using the variation of $\bar{\lambda}$ with Ra_w from equation (7.21), a complete description of the plume structure at different Ra_w can be obtained. This knowledge of the near wall plume structure at different Ra_w could be used to build wall functions for turbulence modelling of high Rayleigh number convection.

The non dimensional plume spacing in the present high Pr case is about double the value of $Ra_{\lambda_c}^{1/3} = 52$ at $Pr = 1$ (Theerthan & Arakeri 2000, 1998). The larger non-

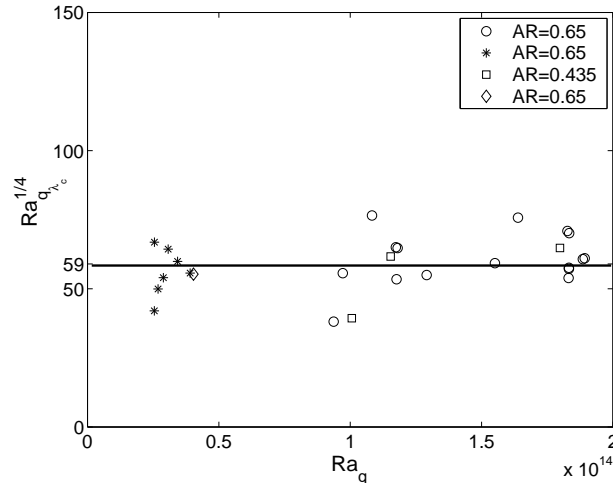


FIGURE 18. Variation of the normalised mean plume spacing, $Ra_{q_{\lambda_c}}^{1/4}$, with flux Rayleigh number

dimensional plume spacing in high Prandtl number convection is an outcome of the gravitational instability condition being satisfied by the thinner thermal boundary layer.

Hence, we have seen that the mean plume spacings predicted from a model, built on the assumption that the near wall local boundary layers on either side of the sheet plumes in high Ra - Sc turbulent free convection are laminar natural convection boundary layers, match the experimental measurements. Many of the earlier boundary layer measurements can be interpreted based on the above phenomenology. The maximum of horizontal RMS velocities observed at near the thermal boundary layer edge has been reproduced by Theerthan & Arakeri (1998) using a similar model at $Pr \sim 1$. This is expected to be because the maximum horizontal velocities in laminar natural convection boundary layers occur at around that region due to the balance of driving horizontal pressure gradient and the viscous resistance. Lui & Xia (1998) observe non repeatability of the spatial dependence of thermal boundary layer thickness, as measured by a single probe, at lower Rayleigh number. We expect this to be due to the presence of laterally moving near wall sheet plumes. They notice repeatability of an M shaped spatial dependence of δ_t at higher Rayleigh number, which could be due to the alignment of the sheet plumes due to the large scale flow.

We have considered the local boundary layers associated with each plume. In addition, in the presence of a mean wind, a global boundary layer spanning the width of each circulation cell would exist. If a single circulation cell exists, this global boundary layer would span the width of the experimental cell, as in the theories of Castaing *et al.* (1989), Siggia (1994), and Grossman & Lohse (2000). This global boundary layer associated with each circulation cell will be of a mixed convection type. To take into account this effect of the wind, the above model has to be modified to include this second global boundary layer. The modification by the mean wind could be a changed plume spacing and a different local boundary layer growth. Measurements over a heated flat plate in the presence of a weak wind by Theerthan & Arakeri (2000) and those over inclined plates by Sparrow & Husar (1969) show aligned sheet plumes and marginal change in the heat flux due to the wind. However, the effect of mean wind on the plume spacing has not been investigated in earlier mixed convection studies (Maughan & Incropera 1990; Moharreri, Armaly & Chen 1988).

Measurements of mean wind strength, plume spacing, and flux in experiments covering a wide range of Rayleigh number would provide this information.

8. Conclusions

In this paper, using a new method of driving the convection by concentration differences across a fine membrane of 0.45μ mean pore size, we were able to study the near wall structures and their interaction with the large scale flow in turbulent free convection at $Ra_w \sim 10^{10} - 10^{11}$ at $Sc \sim 602$. The flux scaled approximately as the $4/3^{rd}$ power of effective concentration difference on one side of the membrane, similar to the earlier studies of Rayleigh - Bénard convection at similar Prandtl numbers. Visualisations showed that the near wall coherent structures in high Rayleigh number turbulent free convection are sheet plumes. Depending on the Rayleigh number and the aspect ratio, different types of large scale flow cells which were driven by plume columns were observed. Multiple large scale flow cells were observed for $AR = 0.65$ and single cells for $AR = 0.435$. The large scale flow creates a near wall mean shear, which was seen to vary across the cross section. The orientation of the large scale flow was seen to change at a time scale much larger than the time scale of one large scale circulation.

The near wall flow consists of sheet plumes; the main effect of the large scale circulation is to align the sheet plumes in the direction of the wind. The plumes are initiated as points and then gets elongated along the mean shear direction in areas of larger mean shear. In areas of low mean shear, the plumes are initiated as points but gets elongated in directions decided by the flow induced by the adjacent plumes. The effect of the near wall mean shear was to align the plumes and reduce their lateral movement and merging. The time scale for the merger of the near wall sheet plumes was an order smaller than the time scale of one large scale circulation. With increase in Rayleigh number, the number of sheet plumes increase; the plumes become more closely and regularly spaced. The probability distribution function of the plume spacings showed a common log-normal form for all the Rayleigh numbers and the aspect ratios investigated.

We proposed that the near wall boundary layers in high Rayleigh number turbulent free convection are laminar natural convection boundary layers. The above proposition was verified by a near wall model, similar to the one proposed by Theerthan & Arakeri (1998), based on the similarity solutions of laminar natural convection boundary layer equations as $Pr \rightarrow \infty$. The model predicted the non dimensional mean plume spacing as $Ra_\lambda^{1/3} = \lambda_c/Z_w = 91.7$, where, Z_w is the near wall length scale (equation (1.3)) in turbulent natural convection; the prediction matched the experimental measurements. This implies that in high Rayleigh number turbulent free-convection, higher driving potentials give rise to lower mean plume spacing so that $\lambda\Delta T^{1/3}$ or $\lambda q^{1/4}$ is a constant for a given fluid.

We have neglected the effect of mean wind in the near wall model proposed in this paper. It was observed that the mean shear aligns the near wall sheet plumes. Hence, one could expect that in the presence of mean wind, the boundary layers between the plume sheets would be forced by an external shear. In this case, the nature of the near wall global boundary layer could be expected to be that of mixed convection. The current analysis needs to be extended considering mixed convection boundary layers to see whether the anomalous flux scaling in high Rayleigh number turbulent free convection in the presence of a mean wind can be explained from this phenomenology.

REFERENCES

- ADRIAN, R. J., FERREIRA, R. T. D. S. & BOBERG, T. 1986 Turbulent thermal convection in wide horizontal fluid layers. *Experiments in Fluids* **4**, 121–141.
- ASHKENAZI, S. & STEINBERG, V. 1999 High Rayleigh number turbulent convection in a gas near the gas-liquid critical point. *Physical Review Letters* **83** (18), 3641–3644.
- BELMONTE, A., TILGNER, A. & LIBCHABER, A. 1994 Temperature and velocity boundary layers in turbulent convection. *Physical Review E* **50** (1), 269–279.
- BURR, U., KINZELBACH, W. & TSINOBER, A. 2003 Is the turbulent wind in convective flows driven by fluctuations? *Phys. Fluids* **15** (8), 2313–2320.
- CASTAING, B., GUNARATNE, G., HESLOT, F., KADANOFF, L., LIBCHABER, A., THOMAE, S., WU, X., ZALESKI, S. & ZANETTI, G. 1989 Scaling of hard thermal turbulence in Rayleigh-Bernard convection. *Jl. Fluid. Mech.* **204**, 1–30.
- CHAVANNE, X., CHILLA, F., CHABAUD, B., CASTAING, B. & HEBRAL, B. 2001 Turbulent Rayleigh-Bénard convection in gaseous and liquid He. *Phys. Fluids* **13** (5), 1300–1320.
- DAYA, Z. & ECKE, R. 2001 Does turbulent convection feel the shape of the container. *Physical Review Letters* **87** (18), 184501.
- DEARDORFF, J. W. 1970 Convective velocity and temperature scales for the unstable planetary boundary layer and for Rayleigh convection. *Journal of the Atmospheric Sciences* **27**, 1211–1213.
- FRANK, H. & ALTHOEN, S. C. 2002 *Statistics, Concepts and applications*. Cambridge University Press.
- FUNFSCHILLING, D. & AHLERS, G. 2004 Plume motion and large scale circulation in a cylindrical Rayleigh-Bénard cell. *Physical Review Letters* **92** (19), 194502.
- GENDRICH, C. P. & KOCHESFAHANI, M. M. 1996 A spatial correlation technique for estimating velocity fields using molecular tagging velocimetry. *Experiments in Fluids* **22**, 67–77.
- GOLDSTEIN, R. J., CHIANG, H. D. & SEE, D. L. 1990 High Rayleigh number convection in a horizontal enclosure. *Jl. Fluid. Mech.* **213**, 111–126.
- GROSSMAN, S. & LOHSE, D. 2000 Scaling in thermal convection : A unifying theory. *Jl. Fluid. Mech.* **407**, 27.
- GROSSMAN, S. & LOHSE, D. 2002 Prandtl and Rayleigh number dependence of the Reynolds number in turbulent thermal convection. *Physical Review E* **66**, 016305.
- GROSSMAN, S. & LOHSE, D. 2004 Fluctuations in turbulent Rayleigh-Bénard convection: The role of plumes. *Phys. Fluids* **16** (12), 4462–4472.
- GROSSMANN, S. & LOHSE, D. 2001 Thermal convection for large Prandtl numbers. *Physical Review Letters* **86** (15), 3316–3319.
- HOWARD, L. 1964 Convection at high Rayleigh number. In *Proc. 11th Int. congress applied mechanics, Munich* (ed. G. H), pp. 1109–1115.
- KADANOFF, L. P. 2001 Turbulent heat flow : structures and scaling. *Physics today* pp. 34–39.
- KERR, R. M. 1996 Rayleigh number scaling in numerical convection. *Jl. Fluid. Mech.* **310**, 139–179.
- KERR, R. M. & HERRING, J. R. 2000 Prandtl number dependence of nusselt number in direct numerical simulations. *Jl. Fluid. Mech.* **419**, 325–344.
- KITAMURA, K. & KIMURA, F. 1995 Heat transfer and fluid flow of natural convection adjacent to upward facing plates. *International Journal of Heat Mass Transfer* **38**, 3149–3159.
- KRAICHNAN, R. H. 1962 Turbulent thermal convection at arbitrary Prandtl numbers. *Phys. Fluids* **5**, 1374 – 1389.
- KRISHNAMURTHI, R. 1970 On the transition to turbulent convection. *Jl. Fluid. Mech.* **42**, 295–320.
- LAM, S., SHANG, X. D., ZHOU, S. Q. & XIA, K. Q. 2002 Prandtl number dependence of the viscous boundary layer and the Reynolds numbers in Rayleigh number convection. *Physical Review E* **65**, 066306.
- LIDE, D. R., ed. 2001 *CRC handbook of chemistry and physics*, 80th edn. CRC Press.
- LUI, S. L. & XIA, K. Q. 1998 Spatial structure of the thermal boundary layer in turbulent convection. *Physical Review E* **57** (5), 5494.
- MAUGHAN, J. R. & INCROPERA, F. P. 1990 Regions of heat transfer enhancement for laminar mixed convection in a parallel plate channel. *International Journal of Heat Mass Transfer* **33**, 555–570.

- MOHARRERI, S. S., ARMALY, B. F. & CHEN, T. S. 1988 Measurements in the transition vortex flow regime of mixed convection above a horizontal heated plate. *Transactions of the ASME, Journal of Heat Transfer* **110**, 358–364.
- NIEMELA, J. J., SKRBK, L., SREENIVASAN, K. R. & DONNELLY, R. J. 2000 Turbulent convection at very high Rayleigh numbers. *Nature* **404**, 837–840.
- NIEMELA, J. J., SKRBK, L., SREENIVASAN, K. R. & DONNELLY, R. J. 2001 The wind in confined thermal convection. *Jl. Fluid. Mech.* **449**, 169–178.
- NIEMELA, J. J. & SREENIVASAN, K. R. 2003 Confined turbulent convection. *Jl. Fluid. Mech.* **481**, 355–384.
- ORION 1999a *ORION, Sensing the future, 1999 laboratory products and electro chemistry handbook*. ORION Research Inc.
- ORION 1999b *SensorlinkTM Model PCM100 Instruction manual*. ORION Research Inc.
- PUTHENVEETIL, B. A. 2004 Investigations on high Rayleigh number turbulent free-convection. PhD thesis, Indian Institute of Science, Bangalore, <http://www.mecheng.iisc.ernet.in/~apbabu/resinfo.htm>.
- PUTHENVEETIL, B. A. & ARAKERI, J. H. 2005 Multifractal nature of plume structure in high Rayleigh number convection. *Jl. Fluid. Mech.* **526**, 245–256.
- ROTEM, Z. & CLASSEN, L. 1969 Natural convection above unconfined horizontal surfaces. *Jl. Fluid. Mech.* **39, part1**, 173–192.
- SCHMIDT, H. & SCHUMANN, U. 1989 Coherent structure of the convective boundary layer derived from large-eddy simulations. *Jl. Fluid. Mech.* **200**, 541–562.
- SHRAIMAN, B. I. & SIGGIA, E. D. 1990 Heat transport in high Rayleigh number convection. *Physical Review A* **42** (6), 3650–3653.
- SIGGIA, E. D. 1994 High Rayleigh number convection. In *Ann Rev Fluid Mechanics*, , vol. 26, pp. 137–168.
- SPANGENBERG, W. G. & ROWLAND, W. G. 1961 Convective circulation in water induced by evaporative cooling. *Phys. Fluids* **4** (6), 743–750.
- SPARROW, E. & HUSAR, R. 1969 Longitudinal vortices in natural convection flow on inclined plates. *Jl. Fluid. Mech.* **37**, 251–255.
- SPIEGEL, E. A. 1971 Convection in stars i. Basic Boussinesque convection. In *Annual Review of Astronomy and Astrophysics*, , vol. 9, pp. 323–352.
- THEERTHAN, S. A. & ARAKERI, J. H. 1994 Planform structure of turbulent Rayleigh-Bénard convection. *Int. Comm. Heat and Mass Transfer* **21**, 561–572.
- THEERTHAN, S. A. & ARAKERI, J. H. 1998 A model for near wall dynamics in turbulent Rayleigh - Bénard convection. *Jl. Fluid. Mech.* **373**, 221–254.
- THEERTHAN, S. A. & ARAKERI, J. H. 2000 Plan form structure and heat transfer in turbulent free convection over horizontal surfaces. *Phys. Fluids* **12**, 884–894.
- TOWNSEND, A. A. 1959 Temperature fluctuations over a heated horizontal surface. *Jl. Fluid. Mech.* **5**, 209–211.
- VERZICCO, R. & CAMUSSI, R. 1999 Prandtl number effects in convective turbulence. *Jl. Fluid. Mech.* **383**, 55–73.
- VERZICCO, R. & CAMUSSI, R. 2003 Numerical experiments on strongly turbulent thermal convection in a slender cylindrical cell. *Jl. Fluid. Mech.* **477**, 19–49.
- WERNE, J. 1993 Structure of hard - turbulent convection in two dimensions: Numerical evidence. *Physical Review E* **48** (2), 1020–1035.
- WU, X. & LIBCHABER, A. 1992 Scaling relations in thermal turbulence: The aspect ratio dependence. *Physical Review A* **45** (2), 842–845.
- XIA, K. Q., LAM, S. & ZHOU, S. Q. 2002 Heat flux measurement in high Prandtl number turbulent Rayleigh-Bénard convection. *Physical Review Letters* **88** (6), 064501.
- XIA, K. Q., SUN, C. & ZHOU, S. Q. 2003 Particle image velocimetry measurement of the velocity field in turbulent thermal convection. *Physical Review E* **68**, 066303.
- XIN, Y. B. & XIA, K. Q. 1997 Boundary layer length scales in convective turbulence. *Physical Review E* **56** (3), 3010.
- ZOCCHI, G., MOSES, E. & LIBCHABER, A. 1990 Coherent structures in turbulent convection, an experimental study. *Physica A* **166**, 387–407.